



It's who
you move
with.

Groveley Lane, Longbridge, Birmingham, B31 2GR

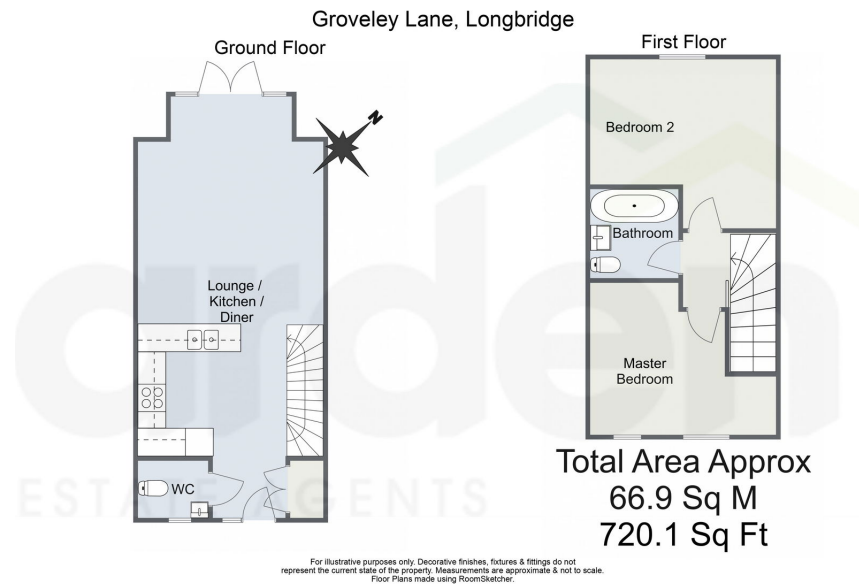
Offers In Region Of £269,950

🛏️ 2 🚿 1 🚻 1

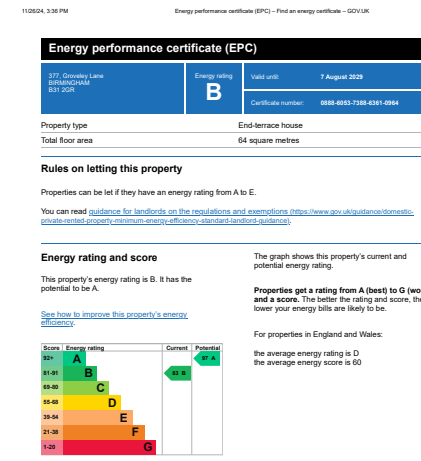


- Two Bedrooms
- Downstairs WC
- Rear Garden
- Ample Storage Space
- Modern Open - Plan Lounge / Kitchen and Diner
- Family Bathroom
- Driveway for Off Road Parking
- Close to Amenities





Introducing this beautifully maintained two-bedroom semi-detached family home, perfectly combining comfort and style. The property features a contemporary open-plan kitchen, lounge, and dining area, a convenient downstairs WC, ample storage throughout, a modern family bathroom, and a charming rear garden. Situated in the highly sought-after area of Longbridge, Birmingham, this home is ideal for modern living.



For more information on this house or to arrange a viewing please call the office on:
0121 453 4349

Alternatively, you can scan the QR to view all of the details of this property online.

