

Leigham Court Road, Streatham, SW16

Guide Price £425,000 - £450,000

🛏️ 2 🚿 1 🚗 1



Please Quote Ref TH0310 For All Enquiries - GUIDE PRICE £425,000 - £450,000 - Well presented two double bedroom ground floor purpose built flat (676 Sq.Ft) with private garden, allocated parking space, and access to well maintained communal gardens, ideally situated in a popular block close to transport links and amenities. The property, offered to the market with a long lease, provides bright and spacious accommodation, with modern interiors throughout - the perfect blend of comfort and convenience in this fantastic residential location. Features include an inviting open plan reception/kitchen opening onto the garden, modern bathroom, gas central heating, double glazing and quality floor coverings.

Key Features

- Please Quote Ref TH0310 For All Enquiries
- Sought After Residential Location
- Bright and Spacious Open Plan Reception/Kitchen
- Private Garden and Allocated Parking Space
- Long Lease
- Beautiful Two Double Bedroom Ground Floor Flat (623 Sq.Ft)
- Modern Interiors and Neutral Finish
- Modern Bathroom
- Communal Gardens
- Close to Transport Links, Schools and Amenities

Leigham Court Road, SW16

Approximate Gross Internal Area = 57.9 sq m / 623 sq ft

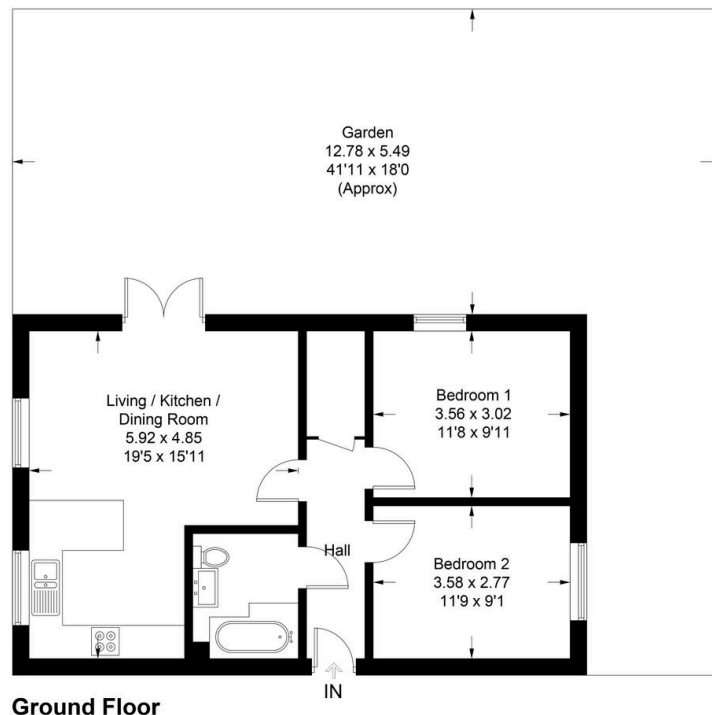


Illustration for identification purposes only, measurements are approximate, not to scale. Fourlabs.co © (ID1150615)