



11 Sherril Close, Staddiscome, Plymouth, PL9 9DB





# Price £210,000



Being sold with vacant possession and no onward chain, is this spacious three-bedroom family home located on the outskirts of Plymouth in close proximity to the picturesque South Hams countryside and coastline.

The property offers spacious accommodation throughout, on the ground floor there is an open plan kitchen/diner, lounge, garden room that overlooks the rear south facing garden and a ground floor WC.

On the first floor there are three generous sized bedrooms and a three-piece bathroom suite.

The property has allocated parking and requires modernisation but offers room for a growing family to enjoy.

Located on the outskirts of Plymouth, the property offers easy access to the South Hams. There are open parks and woodlands to enjoy that also provide a route and access to Bovisand Beach. There are both well regarded primary and secondary schools in close

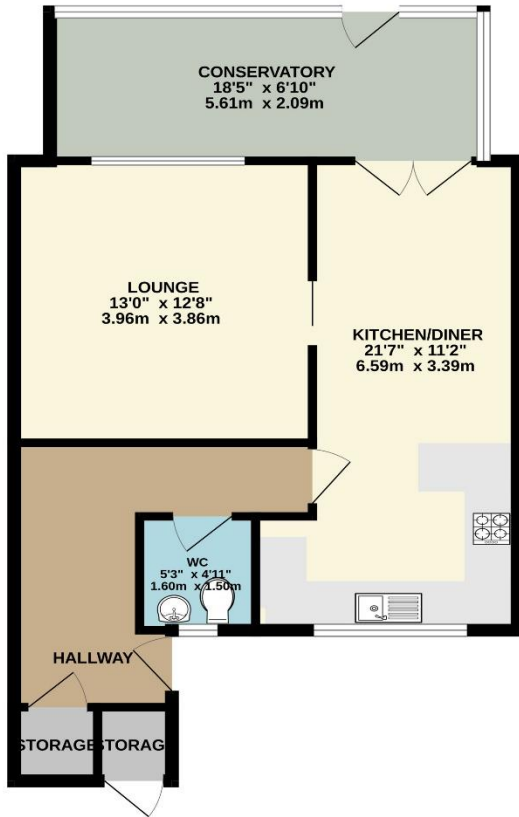


To view this property call Lang Town & Country Estate Agents on [01752 456000](tel:01752456000)





GROUND FLOOR  
635 sq.ft. (59.0 sq.m.) approx.



1ST FLOOR  
462 sq.ft. (43.0 sq.m.) approx.



TOTAL FLOOR AREA : 1097 sq.ft. (102.0 sq.m.) approx.  
Measurements are approximate. Not to scale. Illustrative purposes only  
Made with Metropix ©2024



Lang Town & Country  
6 The Broadway  
Plymouth  
PL9 7AU  
Tel: 01752 456000  
Email: [plymstock@langtownandcountry.com](mailto:plymstock@langtownandcountry.com)  
[www.langtownandcountry.com](http://www.langtownandcountry.com)

Lang Town & Country endeavour to ensure the accuracy of property details produced and displayed, we have not tested any apparatus, equipment, fixtures, fittings or services and so cannot verify that they are connected, in working order or fit for purpose. A buyer must check the availability of any property and make an appointment to view before embarking on any journey to see a property.

