



12 Morley Close, Plympton, Plymouth, Devon, PL7 2FB



# Price £520,000



Located in a popular residential cul-de-sac backing on the grounds of Saltram House is this beautifully presented, four-bedroom detached family home. Built by Clarke Homes this spacious detached house occupies a generous size plot both front and rear.

The principal accommodation comprises on the ground floor of a box bay lounge with French doors leading to upper patio seating area, a separate dining room, a sunroom and a family room/snug and a ground floor WC. There is a recently fitted well appointed kitchen with a range of integrated appliances and access to the integrated double garage which has a utility area.

On the first floor there are four generous size bedrooms, with the master bedroom having the added benefit of an en-suite bathroom. The further three bedrooms are serviced by a three-piece suite that comprises of WC, wash hand basin and a walk-in shower cubicle. There is a loft which has lighting and a loft ladder for access.

To the front of the property there is a driveway that provides ample parking for a growing family and access to the double garage. To the rear of the property there is a private enclosed garden that backs onto open fields. There is a patio seating area and steps leading through a landscaped garden to a lawned garden and further patio area. The property has dual side access to the rear.

This beautifully presented detached family home truly has to be seen to be fully appreciated.

The property is situated within close proximity to a wide array of amenities to tempt any prospective purchaser. Saltram House with its wonderful grounds, is just a few minutes' walk away. Plympton offers good primary and secondary schools, shops, pubs, restaurants and leisure facilities. There is easy access to Plymouth City Centre and the A38, also Dartmoor National Park and the South Devon Coast with beautiful beaches are only a short drive away. Transport links connect you to all the surrounding areas including the vibrant city centre of Plymouth.

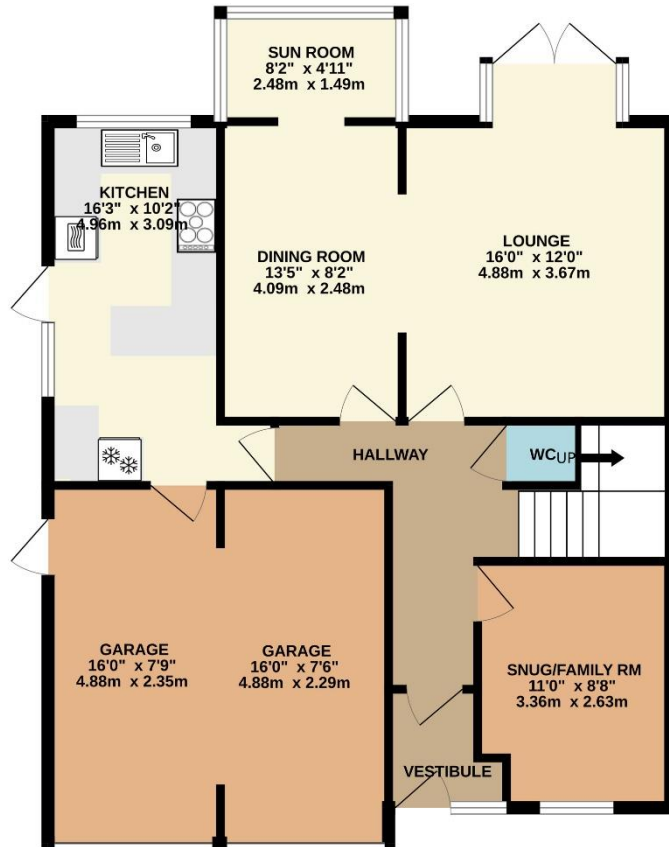


To view this property call Lang Town & Country Estate Agents on **01752 456000**.

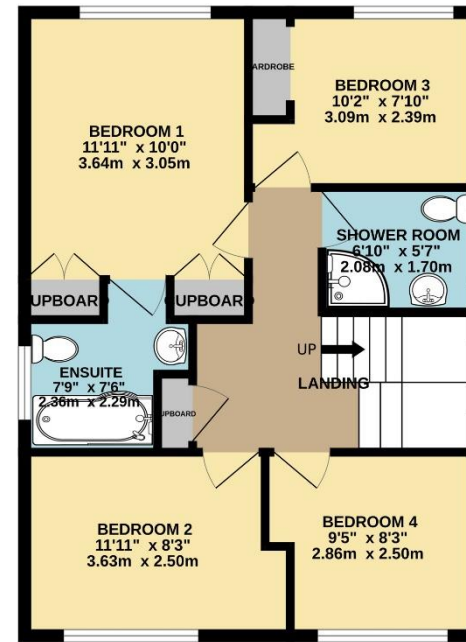
[www.langtownandcountry.com](http://www.langtownandcountry.com)



GROUND FLOOR  
936 sq.ft. (86.9 sq.m.) approx.



1ST FLOOR  
562 sq.ft. (52.2 sq.m.) approx.



TOTAL FLOOR AREA : 1498 sq.ft. (139.1 sq.m.) approx.  
Measurements are approximate. Not to scale. Illustrative purposes only  
Made with Metropix ©2024



Lang Town & Country  
6 The Broadway  
Plymstock  
Plymouth  
PL9 7AU  
Tel: 01752 456000  
Email: [plymstockoffice@langtownandcountry.com](mailto:plymstockoffice@langtownandcountry.com)

Lang Town & Country endeavour to ensure the accuracy of property details produced and displayed, we have not tested any apparatus, equipment, fixtures, fittings or services and so cannot verify that they are connected, in working order or fit for purpose. A buyer must check the availability of any property and make an appointment to view before embarking on any journey to see a property.

