



17 Valley View Road, Higher Compton, Plymouth, Devon, PL3 6QJ

Price £380,000



This beautifully presented four-bedroom detached dormer style bungalow is located on Valley View Road in the sought-after area of Higher Compton. The property has been tastefully extended and upgraded, offering luxurious living spaces throughout.

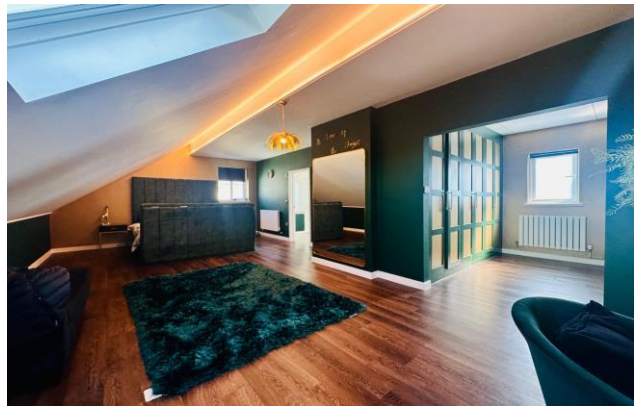
The ground floor features an entrance porch, three bedrooms and a family bathroom as well as the kitchen, which is designed as part of an open-plan living, dining, and kitchen area and creates a spacious and inviting environment. The kitchen features a contemporary layout with high-quality finishes, offering plenty of worktop space. It includes modern, integrated appliances and ample storage, making it both stylish and functional. The kitchen island serves as a central hub, ideal for both cooking and socialising, ensuring a perfect balance between practicality and design with large sliding doors to the rear garden and a ceiling window.



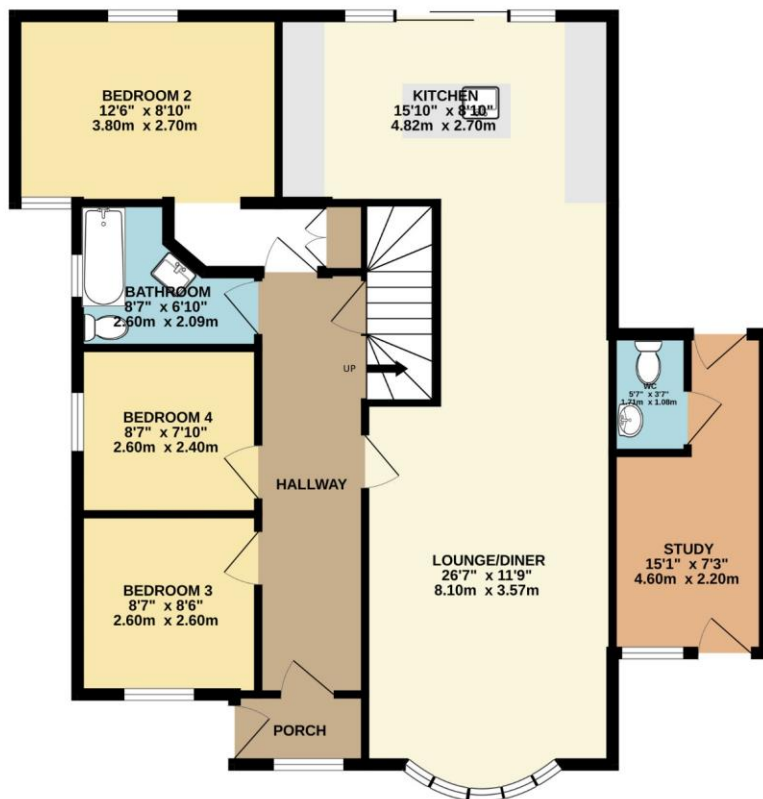
Upstairs, the expansive master suite includes a large bedroom, dressing room, and a luxurious four-piece en-suite bathroom. Outside, the property boasts off-road parking, a sun terrace, and a raised area. Additionally, there is a separate office with its own WC.

Close to local schools and amenities, this home offers both comfort and convenience.

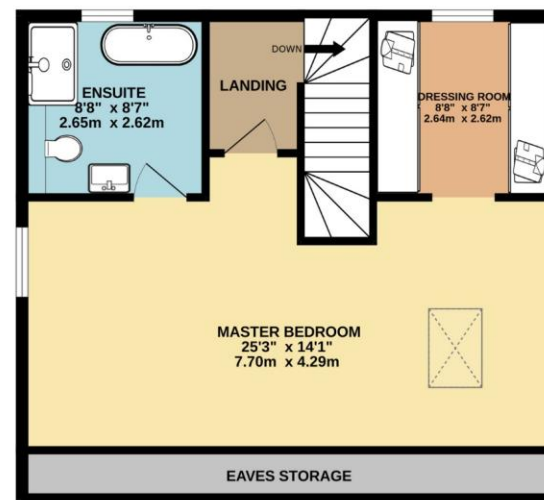
To view this property call Lang Town & Country Estate Agents on **01752 256000**.



GROUND FLOOR
991 sq.ft. (92.1 sq.m.) approx.



1ST FLOOR
579 sq.ft. (53.8 sq.m.) approx.



TOTAL FLOOR AREA : 1570 sq.ft. (145.8 sq.m.) approx.

Whilst every attempt has been made to ensure the accuracy of the floorplan contained here, measurements of doors, windows, rooms and any other items are approximate and no responsibility is taken for any error, omission or mis-statement. This plan is for illustrative purposes only and should be used as such by any prospective purchaser. The services, systems and appliances shown have not been tested and no guarantee as to their operability or efficiency can be given.
Made with Metropix ©2025

Lang Town & Country
6 Mannamead Road
Plymouth
PL4 7AA
Tel: 01752 456000
Email: property@langtownandcountry.com
www.langtownandcountry.com

Lang Town & Country endeavour to ensure the accuracy of property details produced and displayed, we have not tested any apparatus, equipment, fixtures, fittings or services and so cannot verify that they are connected, in working order or fit for purpose. A buyer must check the availability of any property and make an appointment to view before embarking on any journey to see a property.

