



13 Rockville Park, Plymstock, Plymouth, Devon, PL9 7DG



Guide Price £495,000

Nestled in the highly sought-after cul-de-sac in the heart of Plymstock is this deceptively spacious and beautifully presented extended four-bedroom semi-detached home ideal for a growing family.

Immaculately finished by the current owners, the property boasts generous and versatile living accommodation throughout. At the front of the home, a charming bay-fronted lounge features a striking fireplace with an inset log burner, creating a warm and inviting space for cosy evenings.

At the heart of the home lies the stunning open-plan kitchen and dining area with underfloor heating, designed with both everyday living and entertaining in mind. The kitchen is fitted with an extensive range of sleek wall and base units, complemented by Corian worktops and a suite of integrated Neff appliances. Flooded with natural light, the space opens effortlessly onto the south-facing rear garden via stylish bi-fold doors, seamlessly blending indoor and outdoor living.

The rear garden backs onto Dean Cross playing fields home to Plymstock - Cricket, Football and Tennis Clubs, and also benefits from access to a children's play park, making it an ideal setting for family life.

Additional ground floor features include a separate utility room with plumbing for both a washing machine and tumble dryer, internal access to the garage, and a convenient downstairs WC.

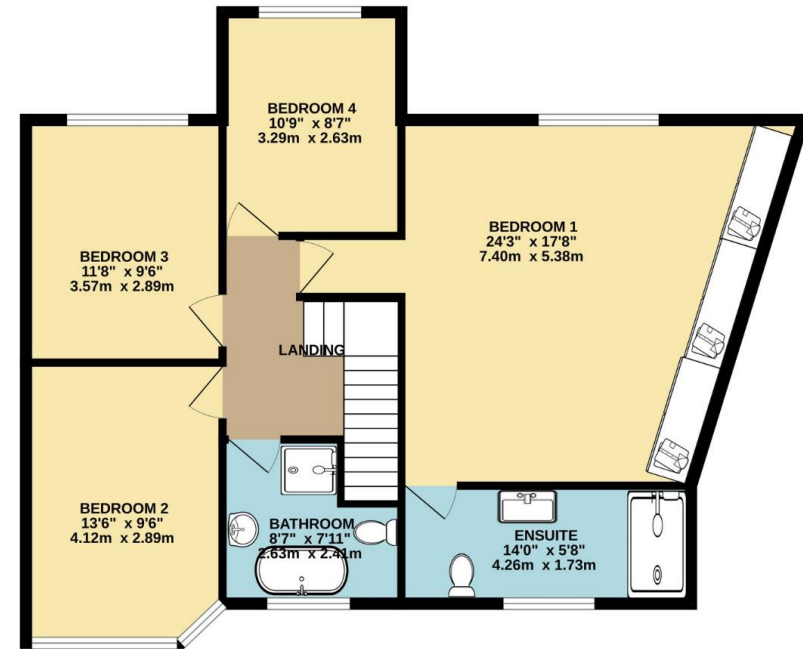
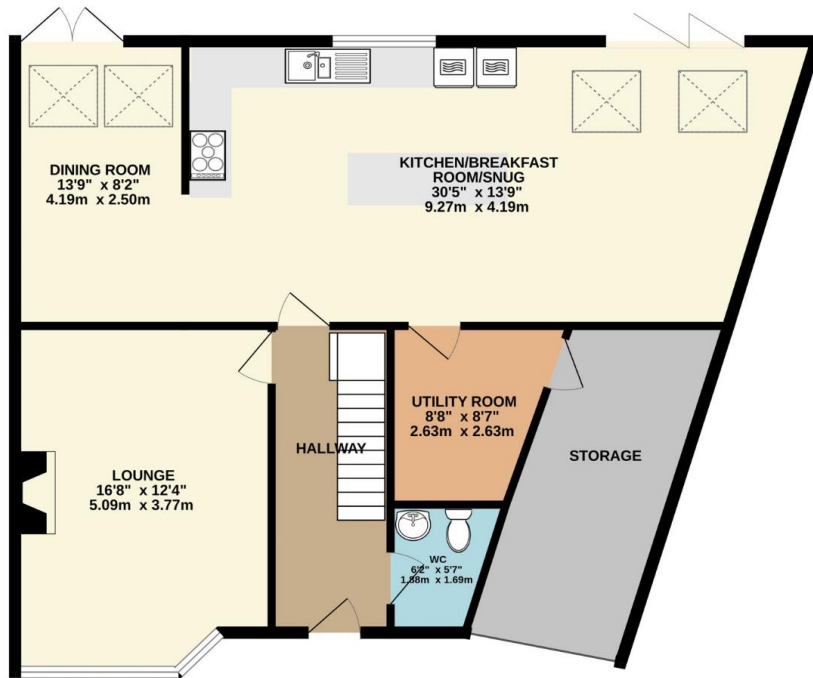
Upstairs, the property offers four well-proportioned bedrooms, including a fantastic master suite with bespoke fitted wardrobes and its own en-suite shower room with underfloor heating. The remaining three double bedrooms are served by a modern four-piece family bathroom comprising of a WC, wash hand basin, walk-in shower cubicle, and bath.

This impressive home offers everything a modern family could need all set in a prime Plymstock location close to excellent schools, shops, and local amenities.

To view this property call Lang Town & Country Estate Agents on **01752 456000**.







TOTAL FLOOR AREA : 1855 sq.ft. (172.3 sq.m.) approx.

Whilst every attempt has been made to ensure the accuracy of the floorplan contained here, measurements of doors, windows, rooms and any other items are approximate and no responsibility is taken for any error, omission or mis-statement. This plan is for illustrative purposes only and should be used as such by any prospective purchaser. The services, systems and appliances shown have not been tested and no guarantee as to their operability or efficiency can be given.
Made with Metropix ©2025



Lang Town & Country

6 The Broadway

Plymstock

Plymouth

PL9 7AU

Tel: 01752 456000

Email: plymstockoffice@langtownandcountry.com

Lang Town & Country endeavour to ensure the accuracy of property details produced and displayed, we have not tested any apparatus, equipment, fixtures, fittings or services and so cannot verify that they are connected, in working order or fit for purpose. A buyer must check the availability of any property and make an appointment to view before embarking on any journey to see a property.

