



5 Andromeda Grove, Sherford, Plymouth, Devon, PL9 8GF

Price £250,000



Situated in the heart of Sherford, this delightful 2-bedroom mid-terrace house is offered with vacant possession and no onward chain, providing an ideal opportunity for any prospective purchaser.

On the ground floor, the property boasts an open-plan lounge, kitchen, and diner, creating a spacious and versatile living area. The contemporary kitchen is fitted with high-gloss wall and base units, along with integrated appliances including a fridge/freezer, dishwasher, gas hob, and oven. Additionally, a convenient W.C. is located on this floor.

Upstairs, there are two well-sized double bedrooms, with Bedroom 1 benefiting from fitted wardrobes for ample storage. The first floor also features a modern shower room, complete with a double shower cubicle, wash hand basin, and W.C.

Externally, the property offers a low-maintenance Astroturf garden, ideal for relaxing or entertaining. The home also comes with allocated parking and a garage, providing plenty of space for vehicles and additional storage.

This well-presented home is a perfect choice for first-time buyers, downsizers, or investors looking for a low-maintenance property in a highly desirable location.

The development is run by a management company and there is a yearly charge for the maintenance and upkeep of the estate. The details of which should be confirmed by your solicitor.

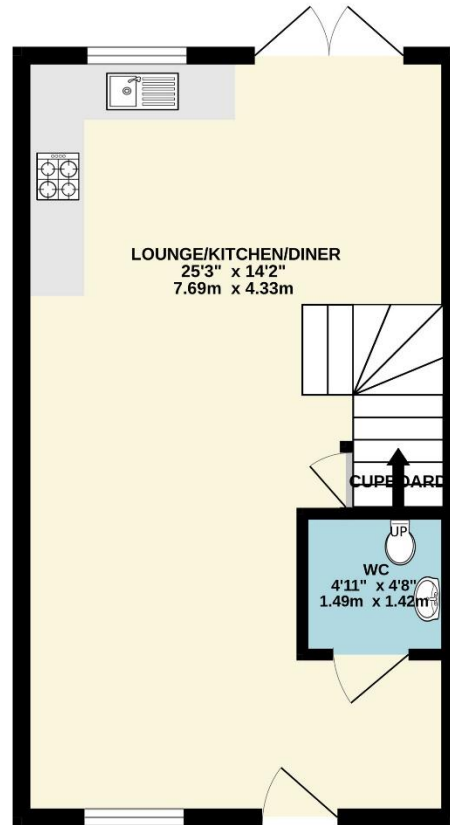


To view this property call Lang Town & Country Estate Agents on **01752 456000**

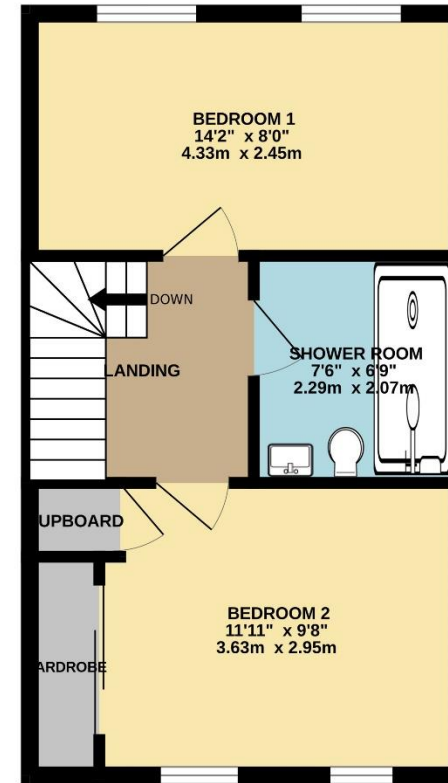
www.langtownandcountry.com



GROUND FLOOR
358 sq.ft. (33.3 sq.m.) approx.



1ST FLOOR
358 sq.ft. (33.3 sq.m.) approx.



TOTAL FLOOR AREA: 717 sq.ft. (66.6 sq.m.) approx.
Measurements are approximate. Not to scale. Illustrative purposes only
Made with Metropix ©2024

Lang Town & Country
6 The Broadway
Plymouth
PL9 7AU
Tel: 01752 456000
Email: plymstock@langtownandcountry.com
www.langtownandcountry.com

Lang Town & Country endeavour to ensure the accuracy of property details produced and displayed, we have not tested any apparatus, equipment, fixtures, fittings or services and so cannot verify that they are connected, in working order or fit for purpose. A buyer must check the availability of any property and make an appointment to view before embarking on any journey to see a property.

