



10 Ivanhoe Road, St Budeaux, Plymouth, Devon, PL5 1PG



£200,000



Introducing this two-bedroom, double-fronted, semi-detached bungalow, offered with no onward chain. This spacious home provides a blend of comfort and practicality.

Upon entering the property, you are welcomed by a central hallway that leads into a bright and spacious sitting room on the left. The sitting room features an attractive round bay window, inviting plenty of natural light and offering a cozy space for relaxation. To the right of the hallway is the first bedroom, a generous double with its own bay window and a built-in cupboard for convenient storage.

The property also offers a second double bedroom, providing ample space for family or guests. Further along, a separate dining room awaits, perfect for entertaining or family meals. The kitchen is well-equipped with a range of fitted wall and base units, offering good storage and workspace. Off the kitchen, you'll find a well-appointed shower room, complete with a separate shower, wash hand basin, WC, and a heated towel rail for added comfort.

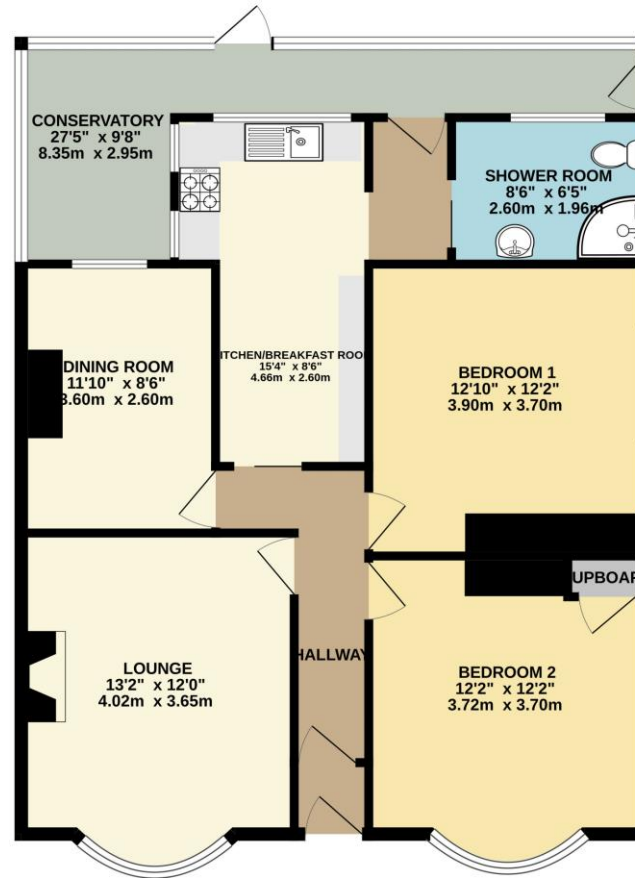
Additional amenities include a utility room/conservatory, providing access to the expansive rear garden. This private outdoor space is generous in size, ideal for gardening, leisure, or entertaining. Side access is also available, enhancing the convenience and accessibility of this delightful property.

This wonderful bungalow is ready to move in and offers the perfect opportunity to create a lovely home in a sought-after location.



To view this property call Lang Town & Country Estate Agents on **01752 256000**.





TOTAL FLOOR AREA: 964 sq.ft. (89.6 sq.m.) approx.

Whilst every attempt has been made to ensure the accuracy of the floorplan contained here, measurements of doors, windows, rooms and any other items are approximate and no responsibility is taken for any error, omission or mis-statement. This plan is for illustrative purposes only and should be used as such by any prospective purchaser. The services, systems and appliances shown have not been tested and no guarantee as to their operability or efficiency can be given.
Made with Metropix ©2024



Lang Town & Country
6 Mannamead road
Mannamead
Plymouth
PL4 7AA

Tel: 01752 256000

Email: property@langtownandcountry.com

www.langtownandcountry.com

Lang Town & Country endeavour to ensure the accuracy of property details produced and displayed, we have not tested any apparatus, equipment, fixtures, fittings or services and so cannot verify that they are connected, in working order or fit for purpose. A buyer must check the availability of any property and make an appointment to view before embarking on any journey to see a property.

