



1 Railway Cottages, Ford, Plymouth, Devon, PL2 1LE





# Price £180,000



Nestled in the heart of Ford, a quaint residential area of Plymouth known for its rich history and character, this delightful 3-bedroom semi-detached cottage is a true gem. Surrounded by the charm of 18th-century workers' cottages and Georgian townhouses, this property offers a perfect blend of period charm and modern comfort.

As you enter, the vestibule provides a convenient space for shoes and coats before stepping into the cosy living room. This inviting space is complete with a charming fireplace, perfect for relaxing evenings. The great-sized kitchen features a freestanding breakfast bar with stools and an array of wall and base units, offering ample storage and workspace. There's also room for freestanding white goods and appliances, alongside a large under-stairs cupboard for additional storage.

To the rear of the ground floor is the well-appointed bathroom, featuring a rainfall shower with an additional handheld attachment over the bath, a wash hand basin, and a WC. The boiler is discreetly housed in a cupboard within the bathroom.

Upstairs, the property boasts three bedrooms. Bedrooms 1 and 2 benefit from built-in storage, while the third room offers flexibility as a guest bedroom, study, or nursery.

Outside, the south-facing rear garden is a peaceful retreat, enclosed by a charming brick wall. It also features pedestrian side gate access and a partially insulated garden room, currently used as a home gym but offering potential for a variety of uses.

This property is offered with no onward chain, making it an ideal choice for those looking to move quickly. Don't miss the chance to own a piece of Ford's history with this characterful and well-located home.

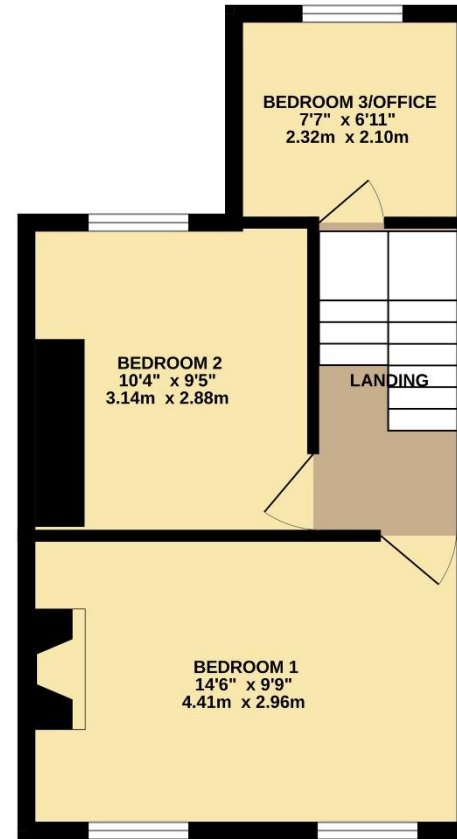
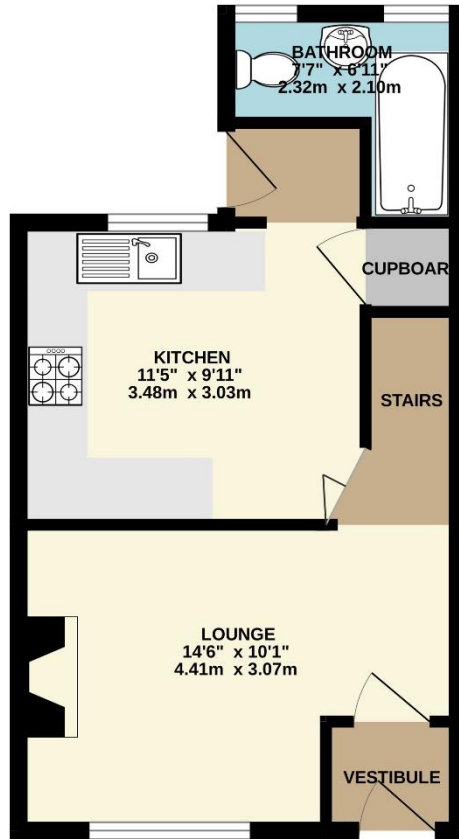


To view this property call Lang Town & Country Estate Agents on **01752 256000**

[www.langtownandcountry.com](http://www.langtownandcountry.com)







TOTAL FLOOR AREA : 684 sq.ft. (63.5 sq.m.) approx.

Whilst every attempt has been made to ensure the accuracy of the floorplan contained here, measurements of doors, windows, rooms and any other items are approximate and no responsibility is taken for any error, omission or mis-statement. This plan is for illustrative purposes only and should be used as such by any prospective purchaser. The services, systems and appliances shown have not been tested and no guarantee as to their operability or efficiency can be given.  
Made with Metropix ©2024



Lang Town & Country  
6 Mannamead Road  
Plymouth  
PL4 7AA  
Tel: 01752 256000  
Email: [property@langtownandcountry.com](mailto:property@langtownandcountry.com)  
[www.langtownandcountry.com](http://www.langtownandcountry.com)

Lang Town & Country endeavour to ensure the accuracy of property details produced and displayed, we have not tested any apparatus, equipment, fixtures, fittings or services and so cannot verify that they are connected, in working order or fit for purpose. A buyer must check the availability of any property and make an appointment to view before embarking on any journey to see a property.

