



smarthomes

Florence Road

Acocks Green, Birmingham

- A Three Bedroom Mid-Terrace Family Home
- Fitted Kitchen & Family Bathroom
- Through Lounge/Diner
- Rear Garden with Brick Built Storage

Guide Price £180,000

Current EPC Rating - D
Current Council Tax Band - B



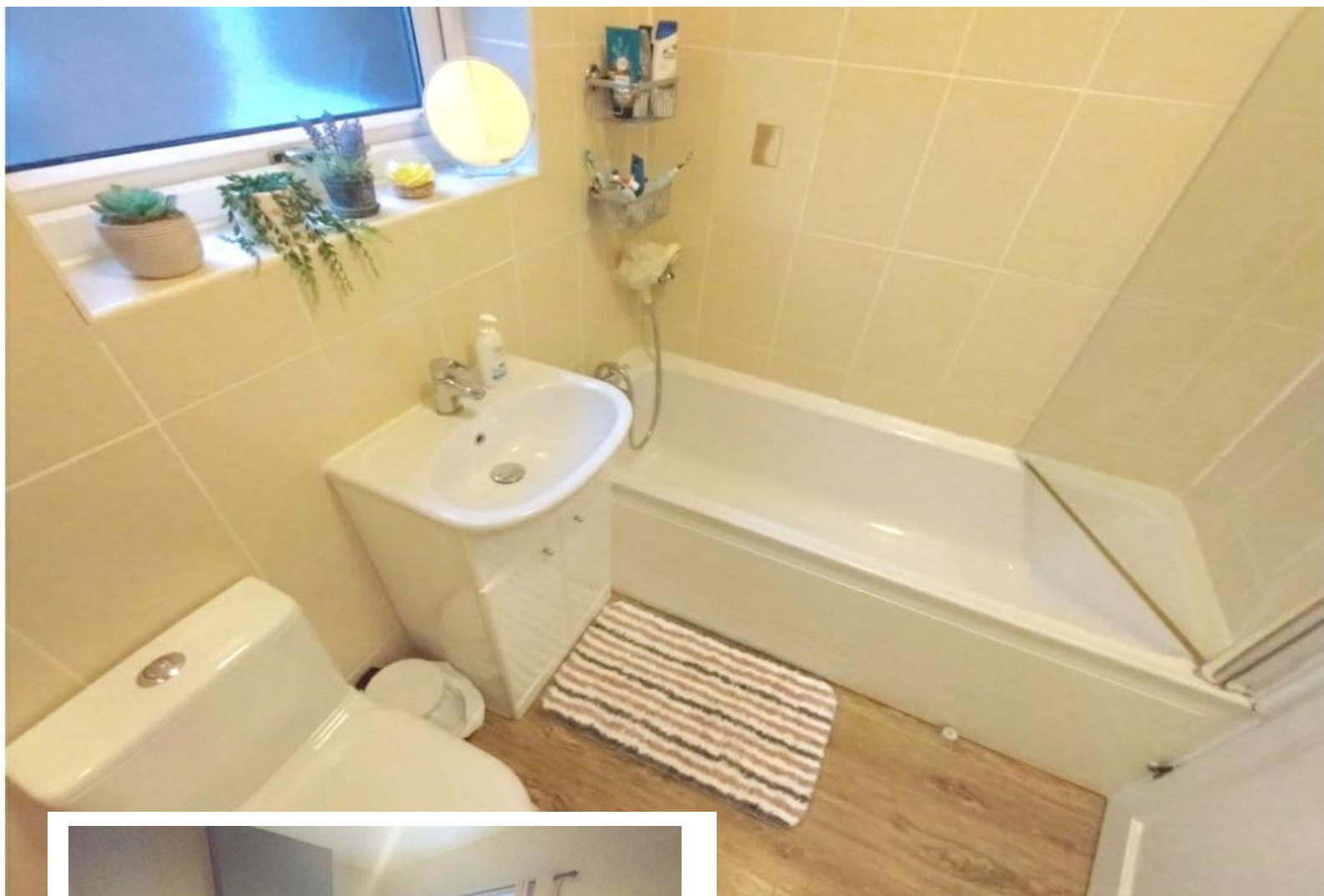


Property Description

MODERN AUCTION PROPERTY

T&C's and Buyers Fees Apply

A three bedroom mid terrace property benefiting from no upward chain and offering accommodation comprising a through lounge/diner, fitted kitchen, family bathroom and rear garden



Rooms & Measurements

Through Lounge/Diner 8.05m x 3.07m min (26'5" x 10'1" min)

Fitted Kitchen to Rear 4.88m max x 2.54m (16'0" max x 8'4")

Bedroom One to Front 4.06m x 3.45m (13'4" x 11'4")

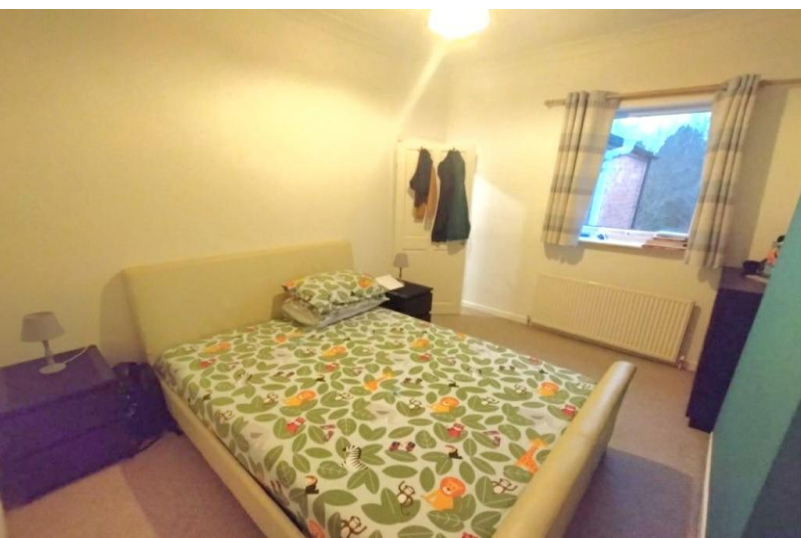
Bedroom Two to Rear 3.71m x 3.05m (12'2" x 10'0")

Bedroom Three to Rear 2.72m max x 2.57m (8'11" max x 8'5")

Family Bathroom to Side

Tenure

We are advised by the vendor that the property is freehold. We would advise all interested parties to obtain verification through their own solicitor or legal representative. EPC supplied by vendor. Current council tax band – B



316 Stratford Road
Shirley
Solihull
B90 3DN

www.smart-homes.co.uk
0121 744 4144

Agents Note: Whilst every care has been taken to prepare these particulars, they are for guidance purposes only. We believe all information to be correct from the day of marketing however, we advise and recommend that your conveyancer and or surveyor verifies all information supplied. All measurements are approximate and are for general guidance purposes only and whilst every care has been taken to ensure their accuracy, they should not be relied upon and potential buyers are advised to recheck the measurements.