



smarthomes

Highfield Road

Hall Green, Birmingham

- A Spacious Three Bedroom Semi-Detached Family Home
- Extended Kitchen & Ground Floor Shower Room
- Extensive Rear Garden & No Upward Chain
- Two Spacious Reception Rooms

£400,000

Current EPC Rating - D
Current Council Tax Band - D





Property Description

A spacious and extended semi-detached family home offering accommodation comprising an open plan through lounge/diner, extended second reception room with conservatory, extended breakfast kitchen, large ground floor shower room, three double bedrooms, first floor family shower room, large rear garden, large side garage and driveway parking



Rooms & Measurements

Open Plan Through Lounge/Diner 7.39m max x 5.61m max (24'3" max x 18'5" max)

Extended Breakfast Kitchen to Rear 5.64m x 3.12m max (18'6" x 10'3" max)

Reception Room Two & Conservatory 6.71m x 4.01m (22'0" x 13'2")

Large Ground Floor Shower Room 3.12m x 2.03m (10'3" x 6'8")

Bedroom One to Front 3.86m x 3.4m (12'8" x 11'2")

Bedroom Two to Rear 3.71m x 3.4m (12'2" x 11'2")

Bedroom Three to Rear 3.1m x 2.51m (10'2" x 8'3")

Family Shower Room 2.16m x 1.75m (7'1" x 5'9")

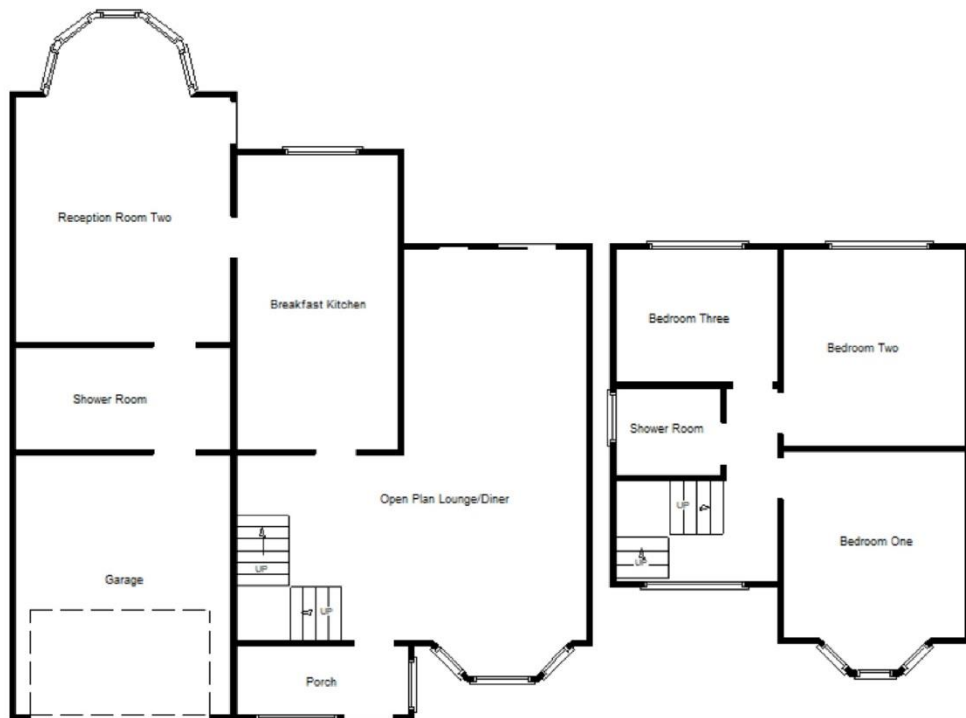
Large Side Garage 5.72m x 4.06m (18'9" x 13'4")

Tenure

We are advised by the vendor that the property is freehold. We would advise all interested parties to obtain verification through their own solicitor or legal representative.

EPC supplied by Nigel Hodges.

Current council tax band – D



316 Stratford Road
 Shirley
 Solihull
 B90 3DN

www.smart-homes.co.uk
 0121 744 4144

Agents Note: Whilst every care has been taken to prepare these particulars, they are for guidance purposes only. We believe all information to be correct from the day of marketing however, we advise and recommend that your conveyancer and or surveyor verifies all information supplied. All measurements are approximate and are for general guidance purposes only and whilst every care has been taken to ensure their accuracy, they should not be relied upon and potential buyers are advised to recheck the measurements.