

2, Hillside, Dunkerton

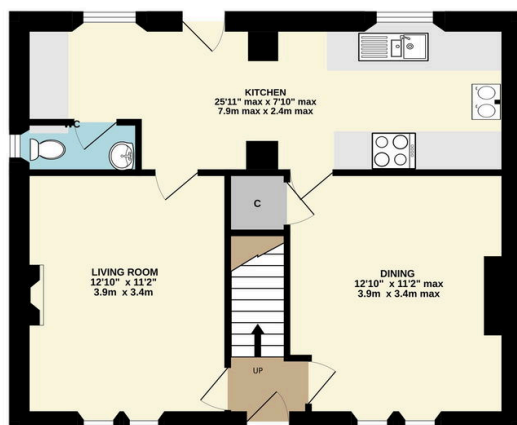
Guide Price £550,000

3 1 2

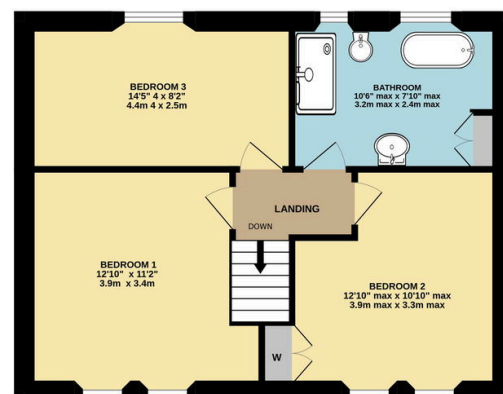


- Property Reference SL 0822 - S Lord
- Three double bedrooms, two reception rooms
- Large kitchen with utility space
- Peaceful location with outstanding distant views
- Double garage/workshop plus stone outbuilding
- Highly desirable village house
- Full bath/shower room plus ground floor cloakroom
- Double glazing, Electric heating, PV panels
- Gardens to front and rear
- Around 3 miles from Bath city centre

GROUND FLOOR



1ST FLOOR



Whilst every attempt has been made to ensure the accuracy of the floorplan contained here, measurements of doors, windows, rooms and any other items are approximate and no responsibility is taken for any error, omission or mis-statement. This plan is for illustrative purposes only and should be used as such by any prospective purchaser. The services, systems and appliances shown have not been tested and no guarantee as to their operability or efficiency can be given.

Made with Metropix ©2024

A highly appealing double fronted semi-detached Victorian house situated in an exceptionally peaceful and private setting in Dunkerton Village, providing well proportioned living space over two floors, including three double bedrooms and all presented in excellent order.