

West Hampstead, NW6

Offers Over £550,000

🛏️ 2 🍴 1 🚗 1



Positioned on the ground floor of this characteristic block is this spacious, bright & contemporary two bedroom apartment. Located between the desirable West Hampstead & Finchley Road with ample local amenities & extensive transport options a short walk away. Offered chain-free and available to view immediately.

Key Features

- JG0621 - Reference Code
- Chain-free
- Modern refurbishment
- 2 double bedrooms
- Communal garden access
- Off-street parking (optional)
- Long lease (144 years unexpired)
- Secure entry
-
-

Priory Road

Approximate Gross Internal Area = 66.2 sq m / 712 sq ft

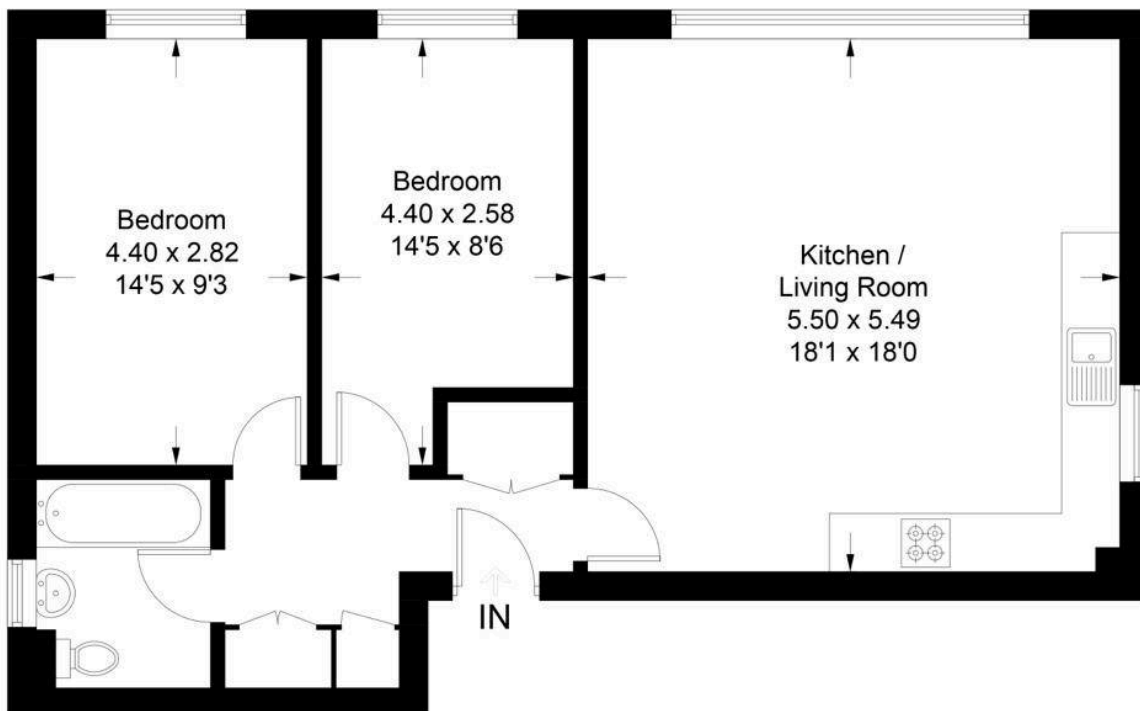


Illustration for identification purposes only, measurements are approximate, not to scale. floorplansUsketch.com © (ID1015594)