

## 19 Ryelands Close

From £500,000

🛏️ 3 🚿 2 🛋️ 2

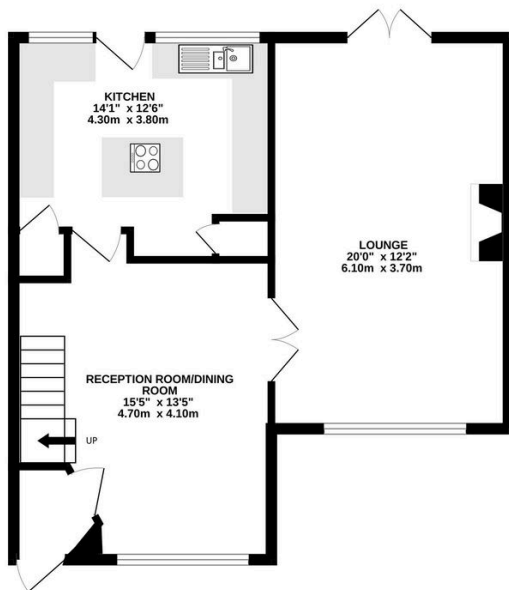


Tucked away in a peaceful cul-de-sac in the desirable area of Caterham, this spacious three-bedroom home offers the perfect blend of calm and convenience.

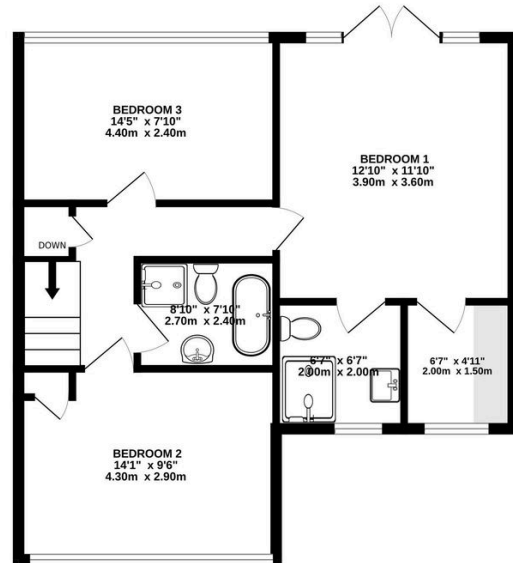
## Key Features

- Reference \*JG0621\*
- Two Bathrooms
- Located Close to Amenities, Schools & Transport links
- Available with No Onward Chain
- Three Double Bedrooms
- Separate Kitchen & Living Rooms
- Large Wrap-around Landscaped Garden

GROUND FLOOR  
594 sq.ft. (55.2 sq.m.) approx.



1ST FLOOR  
602 sq.ft. (55.9 sq.m.) approx.



TOTAL FLOOR AREA : 1196 sq.ft. (111.1 sq.m.) approx.

Whilst every attempt has been made to ensure the accuracy of the floorplan contained here, measurements of doors, windows, rooms and any other items are approximate and no responsibility is taken for any error, omission or mis-statement. This plan is for illustrative purposes only and should be used as such by any prospective purchaser. The services, systems and appliances shown have not been tested and no guarantee as to their operability or efficiency can be given.  
Made with Metroplan 6/2024.