



Salisburys

Fortescue Terrace, PL19 8LT

Offers In Region Of £325,000

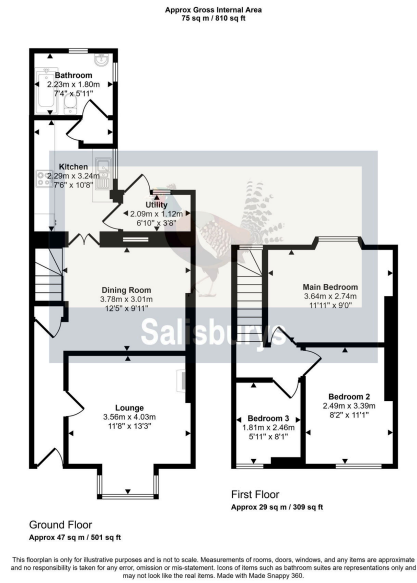
🛏 3 🚿 1 🛋 2



- Attractive mid terraced house • Three bedrooms
- Downstairs Family Bathroom • Gardens to front and rear
- Quiet secluded location
- Two Reception rooms offering flexible accommodation
- Kitchen with separate Utility Area
- Within walking distance to Tavistock centre
- Close to local bus route
- Very well maintained



This property offers a "little bit of countryside" within walking distance to Tavistock centre and must be viewed. This attractive mid-terrace property is situated in a quiet location with accommodation briefly comprising of:- three bedrooms, a Lounge overlooking a pretty courtyard garden, a well fitted Kitchen/Dining Room, separate Utility Room/Entrance Lobby and a Family Bathroom. Upstairs the property has 2 double bedrooms with plenty of storage space and a smaller single bedroom. Externally, this property has a well established front garden with a small lawn and mature shrubs. To the rear of the property there is a sheltered courtyard area that leads across to a well maintained and established garden which benefits from a lawn and patio space including a good sized garden shed.



Score	Energy rating	Current	Potential
92+	A		
81-91	B		
69-80	C		
55-68	D	55 D	65 D
39-54	E		
21-38	F		
1-20	G		

