



Salisburys



# Bedford Bridge, Yelverton, PL20 7RZ

£595,000

🛏 4 🍳 4 🛋 4



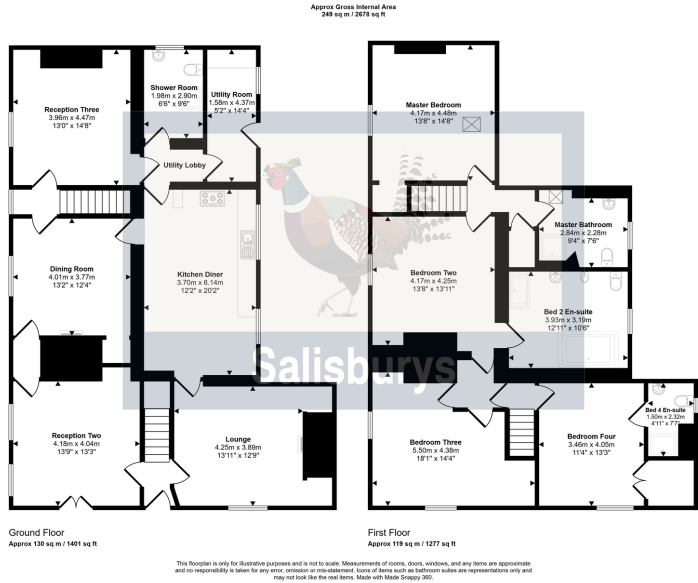
- Stunning spacious character property
- Four large double bedrooms
- Four bathrooms
- Four reception rooms
- Large Kitchen/Breakfast Room with solid oak island
- Flexible accommodation
- Downstairs Shower Room and Utility Room
- Attractive gardens plus Sun Terrace
- Double garage/workshop
- Parking for multiple vehicles







This beautiful CHARACTER PROPERTY with FOUR BEDROOMS, FOUR BATHROOMS and parking for MULTIPLE VEHICLES must be viewed to fully appreciate the accommodation and grounds. The White House is a very attractive property which offers versatile and flexible accommodation briefly comprising of:- Lounge with log burner and feature fireplace, Kitchen/Dining Room with oak units and large island, Utility Room and downstairs Shower Room, separate Dining Room, two further reception rooms, four large double bedrooms and three upstairs bathrooms (one en-suite). Externally the property has a double garage which is currently a workshop, gardens, a private Sun Terrace and parking for multiple vehicles. MUST BE VIEWED!



Score	Energy rating	Current	Potential
92+	A		
81-91	B		
69-80	C		69 C
55-68	D	59 D	
39-54	E		
21-38	F		
1-20	G		

