



Salisburys

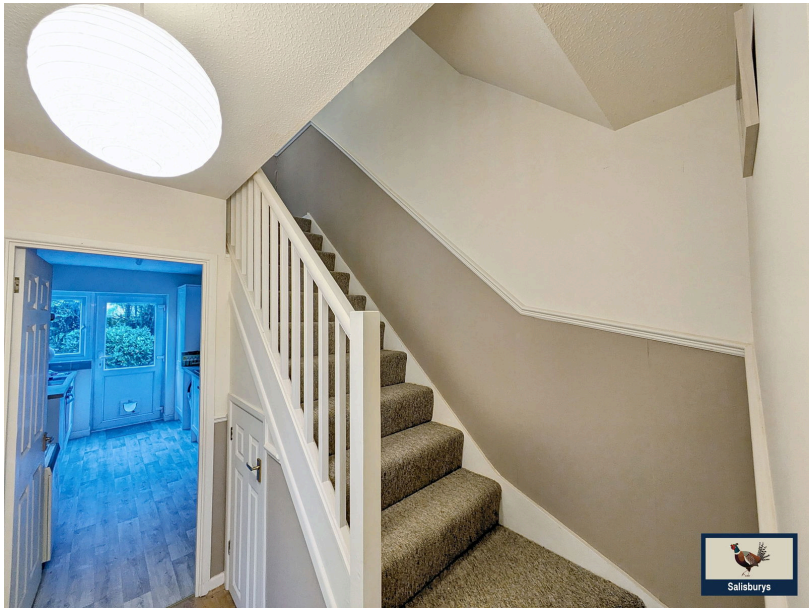
Lutyens Fold, Milton Abbot, PL19 0NR

£285,000

🛏️ 3 🚿 2 🛋️ 2

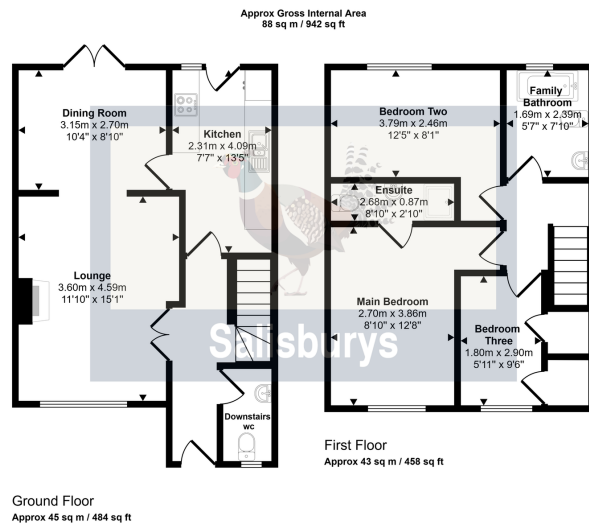


- Semi Detached family home
- Close to the centre of Village
- 3 double Bedrooms, Master with en-suite
- Well presented property
- Fully fitted kitchen
- Cul-de-sac location
- Garage
- Enclosed rear garden
- Views of the countryside
- NO ONWARD CHAIN



This property is well-located in a quiet cul-de-sac location in the village of Milton Abbot, within easy walking distance of it's amenities and near to the ancient Stannary town of Tavistock. This home offers a recently fitted kitchen, dining room, lounge and a downstairs cloakroom, with a garden and the front and side access to the rear garden.

Upstairs, you will find two-double bedrooms and a large single. The master bedroom incorporates an en-suite with a shower, wash basin and toilet. There is attic access with a ladder on the landing.



This floorplan is only for illustrative purposes and is not to scale. Measurements of rooms, doors, windows, and any items are approximate and no responsibility is taken for any error, omission or mis-statement. Icons of items such as bathroom suites are representations only and may not look like the real items. Made with Made Snappy 360.

Score	Energy rating	Current	Potential
92+	A		
81-91	B		81 B
69-80	C		
55-68	D		
39-54	E	53 E	
21-38	F		
1-20	G		

