



lampards

lampards.co.uk
0208 208 0055
info@lampards.co.uk

4a Lonsdale Road,
Queens park,
NW6 6RD

37 Ivy Road

Fixed Price £950,000

 3  1  2

- Period House
- End Of Terrace
- Three Bedrooms
- Large Kitchen Diner
- Private Rear Garden With Storage
- Potential To Extend (STPP)
- Chain Free
- Excellent Order Throughout
- Close To All Amenities
- Viewing Recommended



Welcome to this beautifully presented three-bedroom Victorian home, perfectly positioned in the heart of Cricklewood, NW2. Spanning an impressive 1,462 sq. ft., this charming end-of-terrace property seamlessly blends period character with modern comforts, offering an inviting space for families and professionals alike.

Stepping inside, you are greeted by a bright and spacious reception area, boasting high ceilings and original features that enhance the home's timeless appeal. The well-proportioned bedrooms provide ample space for relaxation, while the family bathroom and additional downstairs cloakroom ensure convenience for busy households.

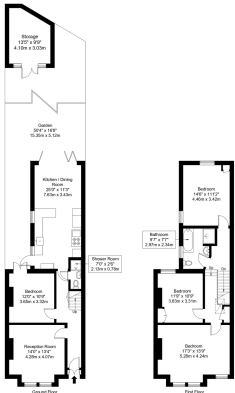
Presented in excellent order, this home is ready to move into, yet offers exciting potential for further enhancement. Subject to planning permission.





Ivy Road, NW2 6SY

Approx Gross Internal Area = 135.8 sq m / 1462 sq ft
 Garden = 107.4 sq m / 1156 sq ft
 Storage = 11.02 sq m / 119 sq ft
 Total = 254.22 sq m / 2737 sq ft



Ref : Copyright B L E U
 The Floor plan is not to scale and measurements and areas shown are approximate and therefore should be used for illustrative purposes only. The plan has been prepared in accordance with the RICS code of Measuring Practice and while we have confidence in the information provided it must not be relied on. Maximum lengths and widths are represented on the floor plan. If there is any aspect of particular importance, you should carry out or commission your own inspection of the property.
 Copyright © B L E U P L A N

