



Worlds End Road, Birmingham, B20 2NS

Offers Over £390,000

3 1 1



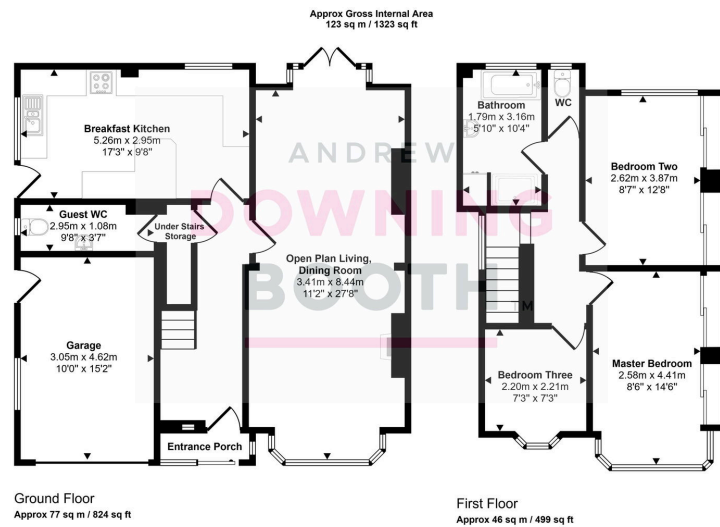
A charming three-bedroom semi-detached home at Worlds End Road, offering comfortable family living in a convenient and well-established location.

This property is ideally situated in the sought-after Handsworth Wood area of Birmingham, offering excellent access to local amenities including shops, cafes, and public transport links. Families will benefit from a selection of nearby schools catering to all ages, ensuring convenience for school runs. The area also provides parks and green spaces for outdoor leisure, making it perfect for children and pets. With easy access to the city centre and major road networks, this location combines a vibrant community feel with excellent connectivity, making it an ideal choice for family living or first-time buyers seeking a well-connected and welcoming neighbourhood.

The accommodation is arranged over two floors and comprises an entrance porch leading to a welcoming entrance hall, an open-plan living and dining area, a breakfast kitchen, and a guest WC. Stairs lead to the first floor, which houses two double bedrooms, a single bedroom, a family bathroom, and a separate WC.

Early viewing is highly recommended to fully appreciate this charming family home – contact us today to arrange your appointment.





This floorplan is only for illustrative purposes and is not to scale. Measurements of rooms, doors, windows, and any items are approximate and no responsibility is taken for any error, omission or mis-statement. Icons of items such as bathroom suites are representations only and may not look like the real items. Made with Made Snappy 360.

- Three Bedroom Semi-Detached Home
- Beautifully Presented Throughout
- Spacious Living/Dining Room
- Generously Sized Garden
- Driveway & Side Garage
- Guest WC
- EPC Rating: D
- Council Tax Band: C

