





33 Brook Road

Guide Price £250,000

 3  1

Spacious three-bedroom terraced home. | Located in Thurnby Lodge, Leicester. | Quiet residential street near amenities. | Modern kitchen with integrated appliances. | Detached utility room for extra storage. | Bright living room with natural light. | Converted wet room upstairs. | Large garden with potential driveway. | Gas central heating. | Move-in ready property.

Floor Area

850 sq. ft.

Tenure

Not given

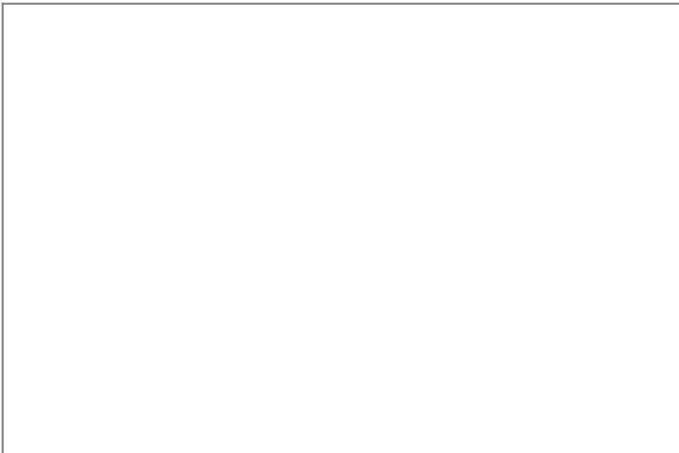
Service Charge

£ per annum

Ground Rent

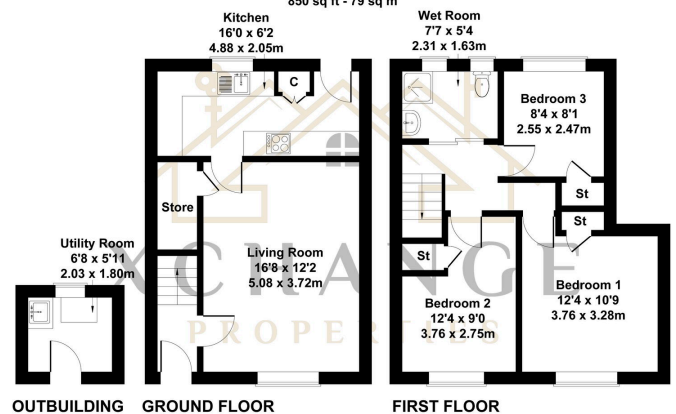
£ per annum

- Spacious three-bedroom terraced property in Thurnby Lodge, Leicester.
- Bright living room with ample natural light and under-stair storage.
- Detached utility room offering extra functionality.
- Large rear garden with potential for a driveway.
- Council Tax Band - A
- Quiet residential street with excellent local amenities.
- Modern kitchen with integrated appliances and breakfast bar.
- Converted wet room with stylish tiled walls.
- Move-in ready with gas central heating and double glazing.
- Leicester City Council



33 Brook Road, Leicester, LE5 2HE

Approximate Gross Internal Area
850 sq ft - 79 sq m



Not to Scale. Produced by The Plan Portal 2024
For Illustrative Purposes Only.