





35 Hill Road, Keresley End

Guide Price £180,000

 2  1

Finished to a high standard | Spacious living room and modern kitchen | Large, private rear garden | Two double bedrooms | Stylish, modern shower room | Two-car driveway for convenience | Perfect for first-time buyers | Excellent local amenities nearby | Close to well-regarded schools | Ideal for relaxation and entertaining.

Floor Area

850 sq. ft.

Tenure

Freehold

Service Charge

£ per annum

Ground Rent

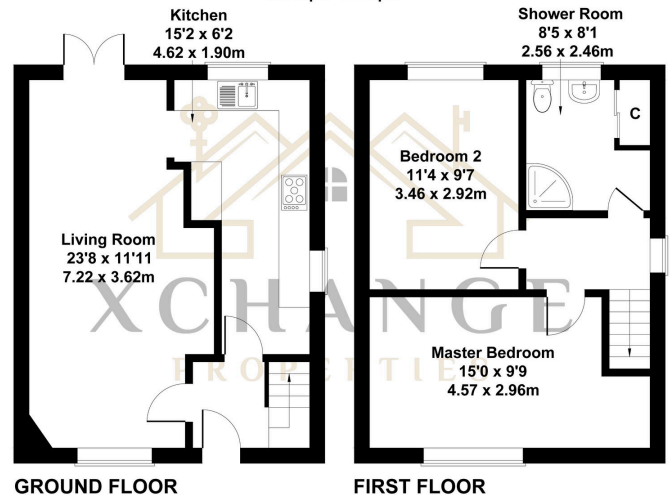
£ per annum

- High-quality finish throughout.
- Large, private, and non-overlooked rear garden.
- Stylish and modern shower room.
- Close to excellent local amenities and schools.
- EPC - D
- Spacious living room and modern kitchen.
- Two generously sized double bedrooms.
- Two-car driveway for off-road parking.
- Perfect for first-time buyers and entertaining.
- Council Tax Band A | Nuneaton & Bedworth Council



35 Hill Road, Keresley End, Coventry, CV7 8JQ

Approximate Gross Internal Area
850 sq ft - 79 sq m



Not to Scale. Produced by The Plan Portal 2024
For Illustrative Purposes Only.

Energy Efficiency Rating		Current	Potential
<i>Very energy efficient - lower running costs</i>			
(92 plus) A			
(81-91) B			86
(69-80) C			
(55-68) D		55	
(39-54) E			
(21-38) F			
(1-20) G			
<i>Not energy efficient - higher running costs</i>			
England & Wales	EU Directive 2002/91/EC	