

The Dingle, Cheswick Green, Solihull, B90 4JW

Offers Over £550,000

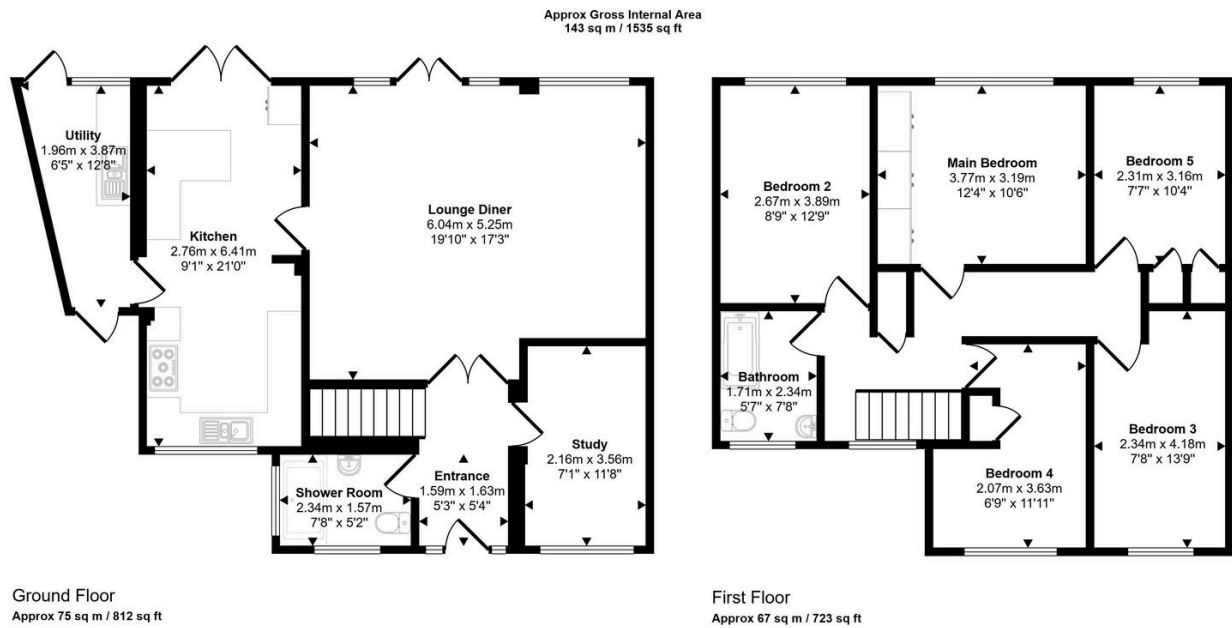
🛏 5 🚗 2 🚲 1



A beautifully presented and extended five-bedroom detached family home in the desirable area of Cheswick Green, Solihull. Viewings Highly Recommended.

Key Features

- Five Bedroom Detached Property
- Extended Accommodation
- Downstairs Shower Room
- Utility Room
- Close to Local Amenities
- Viewings Highly Recommended
-
-



This floorplan is only for illustrative purposes and is not to scale. Measurements of rooms, doors, windows, and any items are approximate and no responsibility is taken for any error, omission or mis-statement. Icons of items such as bathroom suites are representations only and may not look like the real items. Made with Made Snappy 360.