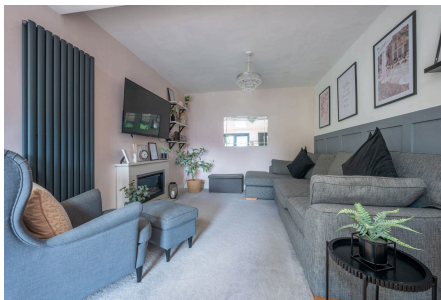


## Springfield Crescent, Edmdon, Solihull, B92 9AE

Offers In Region Of £395,000

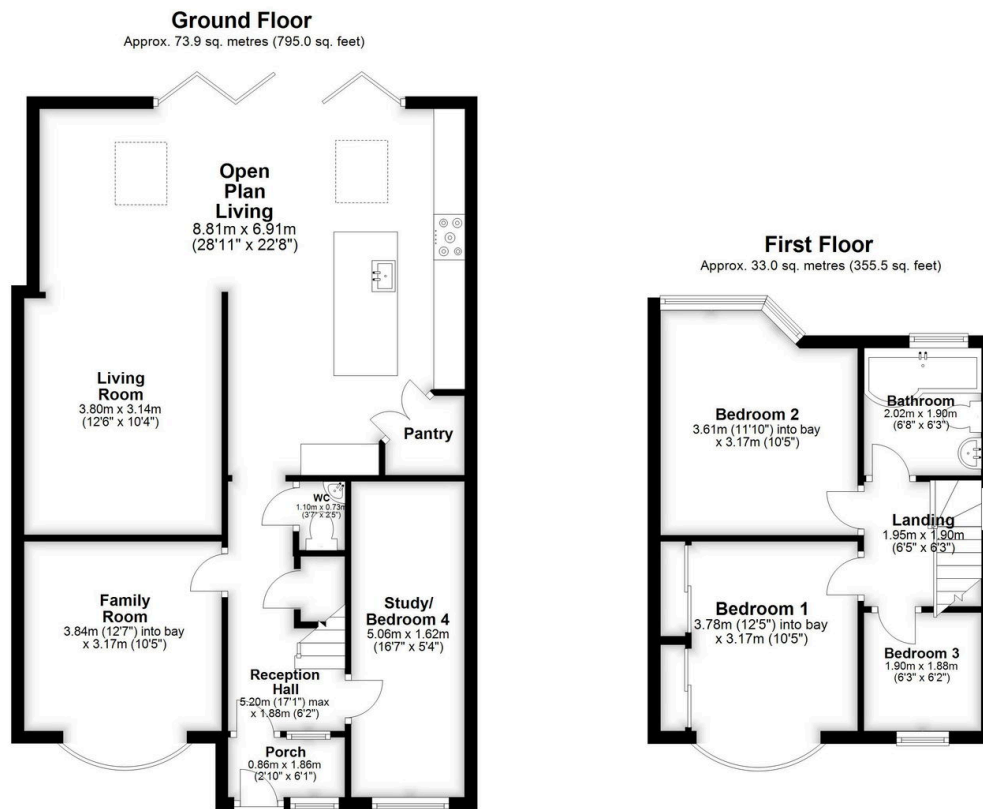
🛏 3 🚗 1 🚗 3



A spacious and extended three/four bedroom family home situated in Springfield Crescent, B92. Viewings Highly Recommended

## Key Features

- Three/Four Bedrooms
- Three Reception Rooms
- Downstairs W.C
- Nice Size Rear Garden
- Viewings Highly Recommended
- Semi Detached House
- Open Plan Kitchen to Rear
- Off Road Parking
- Modern Style Throughout
- Popular Location



Total area: approx. 106.9 sq. metres (1150.5 sq. feet)

Floor plans are intended to give a general indication of the proposed layout. Details and measurements within are not intended to form part any contract.  
Plan produced using PlanUp.