

Hytall Road, Shirley, Solihull, B90 1NE

Offers In Region Of £240,000

3 1 1



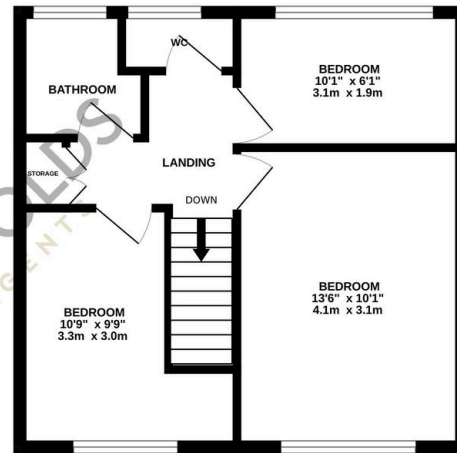
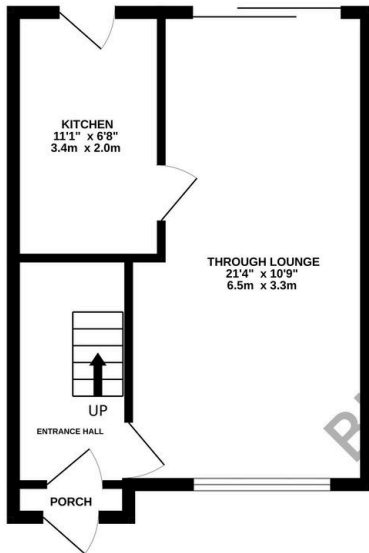
- Three Bedrooms Family Home
- Kitchen to Rear
- Private Rear Garden
- Popular Location
- Gas Central Heating
- Through Lounge
- Off Road Parking
- Ideal Location
- Double Glazing
- Viewings Highly Recommended



GROUND FLOOR
346 sq.ft. (32.2 sq.m.) approx.



1ST FLOOR
390 sq.ft. (36.2 sq.m.) approx.



TOTAL FLOOR AREA: 736 sq.ft. (68.4 sq.m.) approx.

Whilst every attempt has been made to ensure the accuracy of the floorplan contained here, measurements of doors, windows, rooms and any other items are approximate and no responsibility is taken for any error, omission or mis-statement. This plan is for illustrative purposes only and should be used as such by any prospective purchaser. The services, systems and appliances shown have not been tested and no guarantee as to their operability or efficiency can be given.

Made with Metropix ©2024

A three bedroom mid-terraced property situated in Hytall Road, B90. Viewings Highly Recommended. NO UPWARD CHAIN