

## Norton Lane, Wythall, Birmingham, B47 6HA

Offers In Region Of £425,000

🛏 4 🚗 2 🚗 2

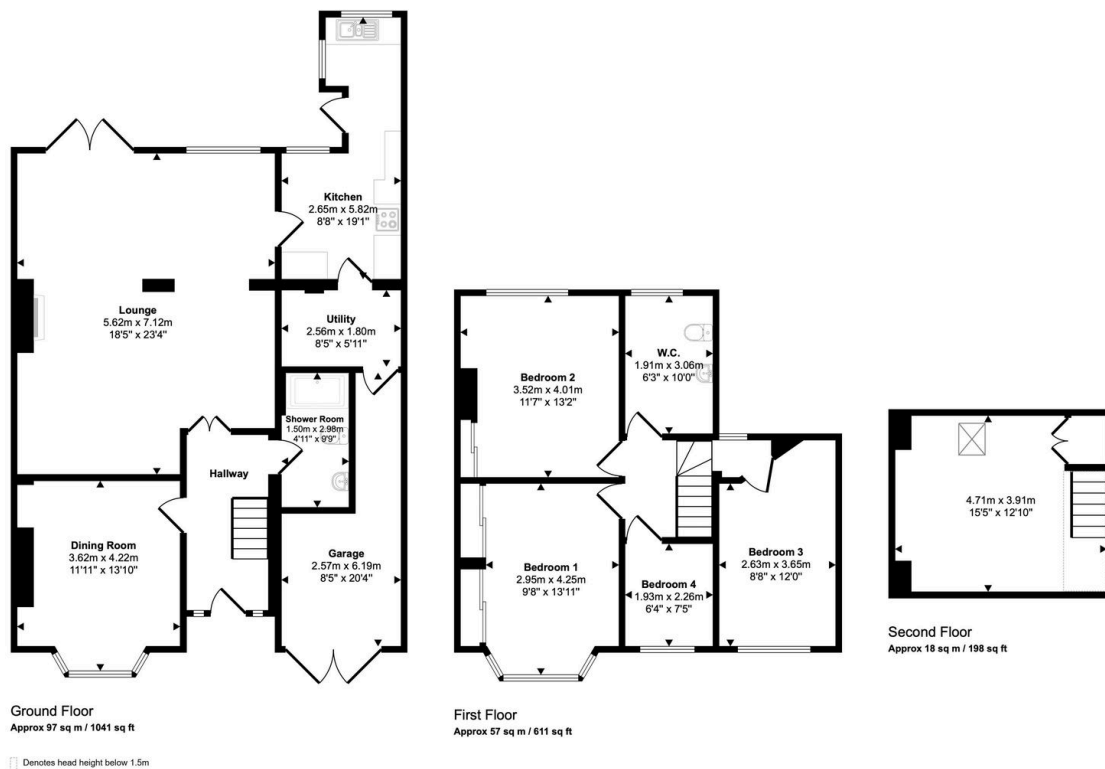


Spacious Four-Bedroom Semi-Detached Home with Large Garden and Stunning Open Views on Norton Lane offered for sale with NO UPWARD CHAIN.

## Key Features

- Spacious Four-Bedroom Semi-Detached Family Home
- Kitchen with Potential for Modernization
- Buyers fee applies
- Off-Road Parking and Garage
- Excellent Opportunity for Upgrading Throughout
- Two Generous Reception Rooms
- Convenient Downstairs Shower Room and Utility Room
- Being sold through reservation fee
- Large Rear Garden with Stunning Open Views
- Sought-After Location in Wythall

Approx Gross Internal Area  
172 sq m / 1850 sq ft



This floorplan is only for illustrative purposes and is not to scale. Measurements of rooms, doors, windows, and any items are approximate and no responsibility is taken for any error, omission or mis-statement. Icons of items such as bathroom suites are representations only and may not look like the real items. Made with Made Snappy 360.