

## Delrene Road, Hall Green, Birmingham, B28 0TL

Offers Over £325,000

3 1 2



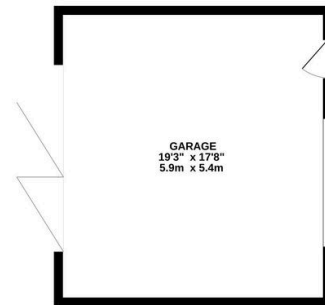
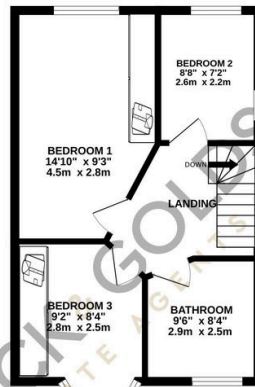
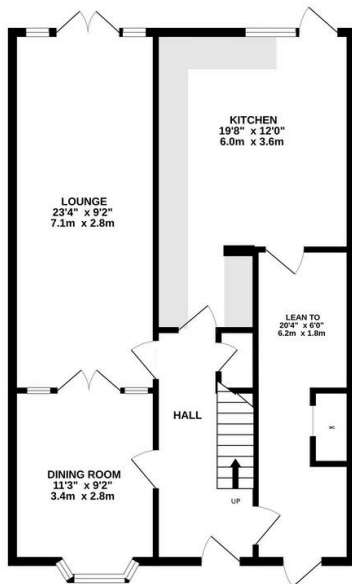
- Three-bedroom semi-detached property
- Convenient downstairs WC
- Three generously sized bedrooms
- Family bathroom to First Floor
- Large private rear garden
- Detached garage
- Off-road parking
- 
-



GROUND FLOOR  
834 sq.ft. (77.5 sq.m.) approx.

1ST FLOOR  
422 sq.ft. (39.2 sq.m.) approx.

2ND FLOOR  
340 sq.ft. (31.5 sq.m.) approx.



TOTAL FLOOR AREA: 1596 sq.ft. (148.3 sq.m.) approx.

Whilst every attempt has been made to ensure the accuracy of the floorplan contained here, measurements of doors, windows, rooms and any other items are approximate and no responsibility is taken for any error, omission or mis-statement. This plan is for illustrative purposes only and should be used as such by any prospective purchaser. The services, systems and appliances shown have not been tested and no guarantee as to their operability or efficiency can be given.  
Made with Metropix ©2024

A nice size three bedroom semi detached family home situated on Delrene Road, Hall Green. Viewings Highly Recommended.