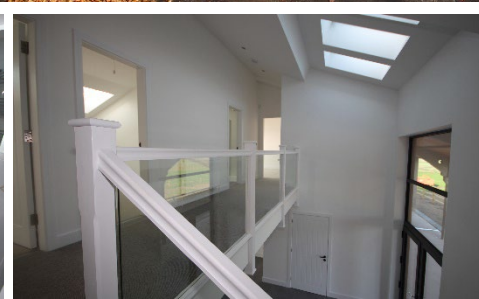


THE VIEW, HILL TOP FARM HICKLING PASTURES





The View is a recently completed contemporary home offering approximately 4,000sqft of accommodation with a long driveway approach through its own land, plus a large yard area of hard standing, which could make excellent equestrian facilities. The property itself is positioned on the site of an original farm with a plot of approximately one acre, which is being sold with the property, and a further ten acres can be available to purchase by separate negotiation.

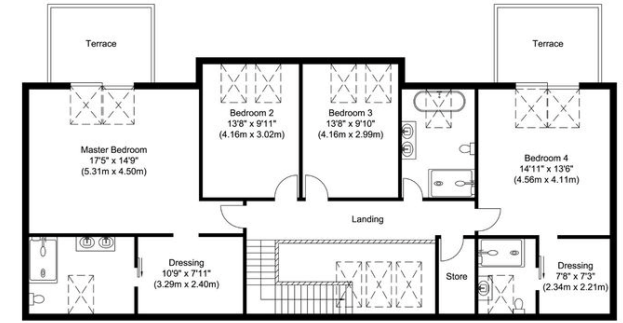
This grand design home really makes the most of the panoramic views to all aspects, whilst having solitude and privacy with only one other property nearby. With no expense spared, this home offers a practical lavish living and design with affordable living costs in mind.

Internally, the property comprises of entrance hallway, cloakroom, study, living room, bedroom five with ensuite and the real heart of the home – a living kitchen with island, dining and seating space with floor to ceiling aluminum doors taking in the panoramic views over the Vale of Belvoir. The first floor offers an impressive master suite with dressing room, ensuite and roof terrace, a second guest suite also with ensuite and roof terrace and two further double bedrooms serviced by main family bathroom. Externally, the property offers an outside covered veranda allowing for all year round enjoyment of the locations and views, with integral garaging allowing you to use the integral garage as a practical all weather covered area.

Set on the edge of this popular village with renowned gastro pub and within easy striking distance of Nottingham, West Bridgeford and A46 with mainline trains, and airports all within easy reach. Sold with no onward chain.



Ground Floor
 Approximate Floor Area
 2752.76 sq. ft
 (255.74 sq. m)



First Floor
 Approximate Floor Area
 1325.25 sq. ft
 (123.12 sq. m)

Illustration for identification purposes only, measurements are approximate, not to scale.

Moore V Ltd trading as Moores Estate Agents gives notice that: 1. These particulars do not constitute an offer or contract or part thereof. 2. All descriptions, photographs and plans are for guidance only and should not be relied upon as statements or representations of fact. All measurements are approximate and not necessarily to scale. Any prospective purchaser must satisfy themselves of the correctness of the information within the particulars by inspection or otherwise. 3. Moore V Ltd trading as Moores Estate Agents does not have any authority to give any representations or warranties whatsoever in relation to this property (including but not limited to planning/building regulations), nor can it enter into any contract on behalf of the Vendor. 4. Moore V Ltd trading as Moores Estate Agents does not accept responsibility for any expenses incurred by prospective purchasers in inspecting properties which have been sold, let or withdrawn. 5. If there is anything of particular importance to you, please contact this office and we will try to have the information checked for you.