



FINE & COUNTRY

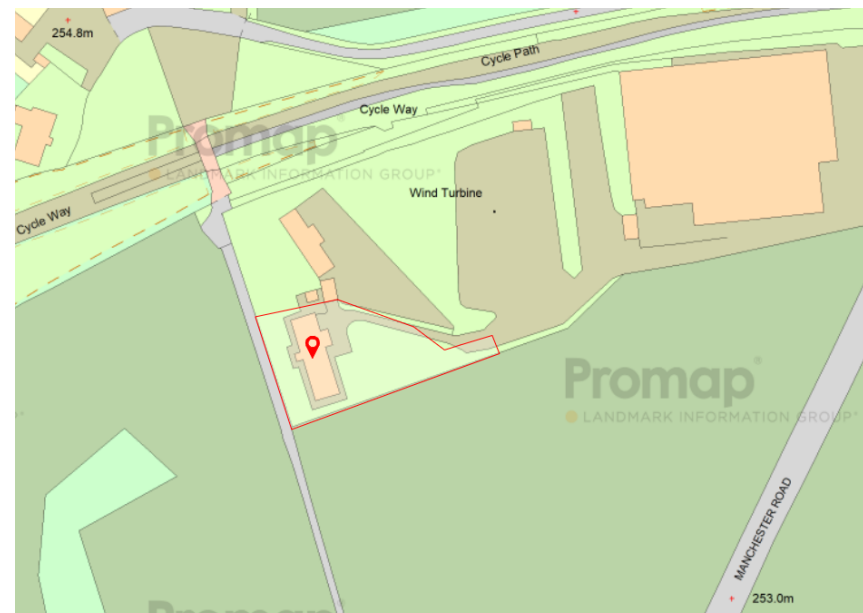
Manchester Road, Millhouse Green, Sheffield, S36 9LQ

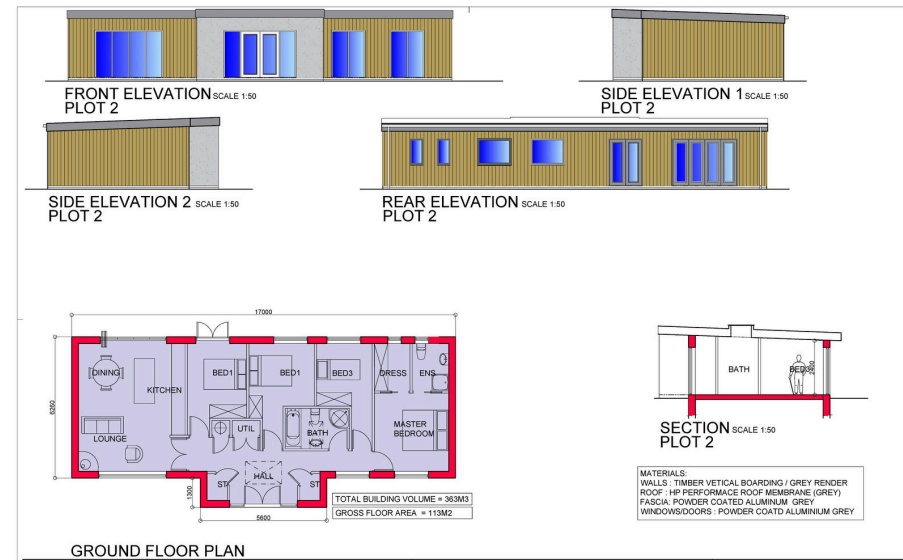
£275,000

🛏️ 4 🚗 2 🚲 1



- Building Plot with Detailed Planning (Planning Number - 2022/0508)
- Amazing Rural Views
- Generous 4 Bedroom Detached Bungalow
- Local Services & Amenities
- M1 Access
- 0.4 of an Acre Approx.
- Quiet Tucked Away Location
- Stunning Setting on the Outskirts of the Peak District
- Bus & Train Services
- Idyllic Outdoors Lifestyle





An impressive development with detailed planning permission for a 4 bedroom detached home; a rare opportunity for a self-build plot extending to approx 0.4 of an Acre; enjoying the most idyllic of locations and a sought after position on the outskirts of a delightful Pennine market town.



House 42, Locke, 44 Shambles St,
Barnsley S70 2SH
Tel: +44 (0)01226 729009
barnsley@fineandcountry.com

Unit 2 Former Council Offices, Eastgate
Honley, Holmfirth HD9 6PA
Tel: +44 (0)1484 550620
huddersfield@fineandcountry.com

The Balance Floor 7, 2 Pinfold Street
Sheffield, South Yorkshire S1 2GU
Tel: +44 (0)114 404 0044
sheffield@fineandcountry.com