



COCKBURN
ESTATE AND LETTINGS AGENTS

cockburn-online.co.uk

West Park, Nottingham, SE9

Offers Over £230,000

🛏 1 🚿 1 🛋 1



- Chain Free Sale
- Communal Parking
- Walking Distance Of Nottingham Railway Station
- Bursting With Natural Light
- EPC Rating C - Potential B
- One Bedroom Apartment
- Long Lease Length
- Easy Reach Of Nottingham Village Shops & Amenities
- Ideal First Time Purchase Or Buy To Let Investment
- Council Tax Band B - Royal Borough Of Greenwich

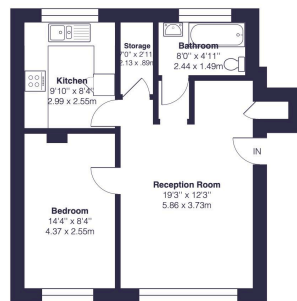


***** CHAIN FREE - OFFERS OVER £230,000 *****

Cockburn would like to present Pickwick Court - a well presented FIRST FLOOR one bed apartment in a great location.




 Pickwick Court, SE9
Gross Approximate Internal Area = 523 sq ft / 48.5 sq m



First Floor



This plan is for layout guidance only and not drawn to scale unless stated. Window and door openings are approximate. Whilst every care is taken in the preparation of this plan, we would advise interested parties to check all dimensions, shapes and complete bearings prior to making any decisions reliant upon them.
By Homeoutlook.co.uk / Copyright 2025

Energy Efficiency Rating		
	Current	Potential
Very energy efficient - lower running costs		
(92 plus) A		
(81-91) B		81
(69-80) C	76	
(55-68) D		
(39-54) E		
(21-38) F		
(1-20) G		
Not energy efficient - higher running costs		
England & Wales	EU Directive 2002/91/EC	

Cockburn EA

352 Footscray Road,
London, SE9 2EB

t: **020 8859 8590**