





## West Park, Mottingham, SE9

£220,000

🛏 1 🚿 1 🛋 1



- Chain Free Sale
- Communal Parking
- Walking Distance Of Mottingham Railway Station
- Bursting With Natural Light
- EPC Rating C - Potential B
- One Bedroom Apartment
- Long Lease Length
- Easy Reach Of Mottingham Village Shops & Amenities
- Ideal First Time Purchase Or Buy To Let Investment
- Council Tax Band B - Royal Borough Of Greenwich



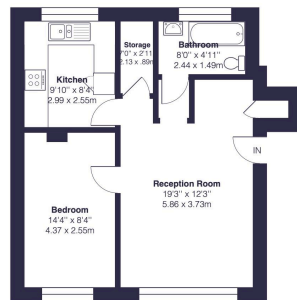


**\*\*\* CHAIN FREE \*\*\***

Cockburn would like to present Pickwick Court - a well presented **FIRST FLOOR** one bed apartment in a great location.



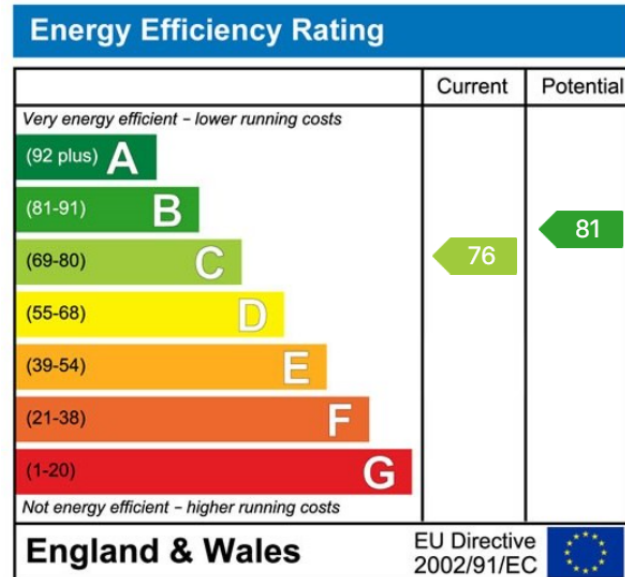
 Pickwick Court, SE9  
Gross Approximate Internal Area = 523 sq ft / 48.5 sq m



First Floor



This plan is for layout guidance only and not drawn to scale unless stated. Window and door openings are approximate. Whilst every care is taken in the preparation of this plan, we would advise interested parties to check all dimensions, shapes and complete bearings prior to making any decisions reliant upon them.  
By Homeoutlook.co.uk / Copyright 2025



**Cockburn EA**

352 Footscray Road,  
London, SE9 2EB

t: **020 8859 8590**