

COCKBURN
ESTATE AND LETTINGS AGENTS

Mottingham Lane

SE9 4RU



Cockburn are pleased to present to the market this large two bedroom flat which is ideal for a professional couple/small family.

Boasting ample space throughout, the property comprises large reception room, fitted kitchen, two bedrooms and family bathroom, with an added benefit of an allocated garage.

Located on the popular Mottingham Lane, you have excellent transport links with regular trains from Mottingham Railway Station, ideal for those needing to commute into London, with buses keeping you connected with both Eltham and Bromley.

With stunning views over Mottingham riding stables horse fields with London's skyline in the background, this property is a real gem and we anticipate won't be on the market for very long! Available immediately, offered unfurnished - CONTACT US TODAY TO ARRANGE YOUR VIEWING!



Key Features:

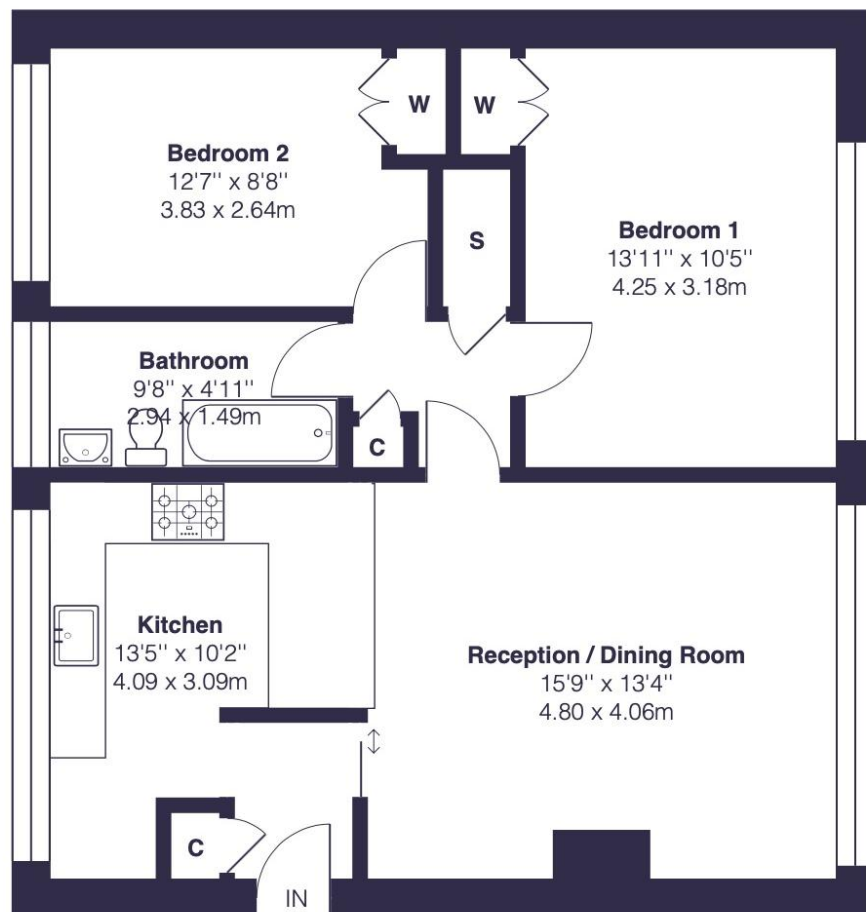
- ❑ Two Double Bedroom Apartment
- ❑ Quiet Residential Development
- ❑ Fantastic Location With Close By Shops & Amenities in Mottingham Village
- ❑ Beautiful View Overlooking Horse's Fields and London's Skyline
- ❑ Allocated Garage
- ❑ Excellent Transport Links Nearby
- ❑ Unfurnished
- ❑ Gas Central Heating
- ❑ EPC Rating E - Potential C
- ❑ Council Tax Band D - Royal Borough Of Greenwich





Cedar Mount, SE9

Approximate Gross Internal Area = 738 sq ft / 68.6 sq m



First Floor

EPC: E

COUNCIL TAX BAND: D

LET TERM: Long Term

For more information on this property or to arrange a viewing please call the office on

0208 859 8590

Alternatively, you can scan below to view all of the details of the property online.



352 Footscray Road
New Eltham
London
SE9 2EB

This plan is for layout guidance only and not drawn to scale unless stated. Window and door openings are approximate.

Whilst every care is taken in the preparation of this plan, we would advise interested parties to check all dimensions, shapes and compass bearings prior to making any decisions reliant upon them.

By Homeoutlook.co.uk / Copyright 2025