



**COCKBURN**  
ESTATE AND LETTINGS AGENTS

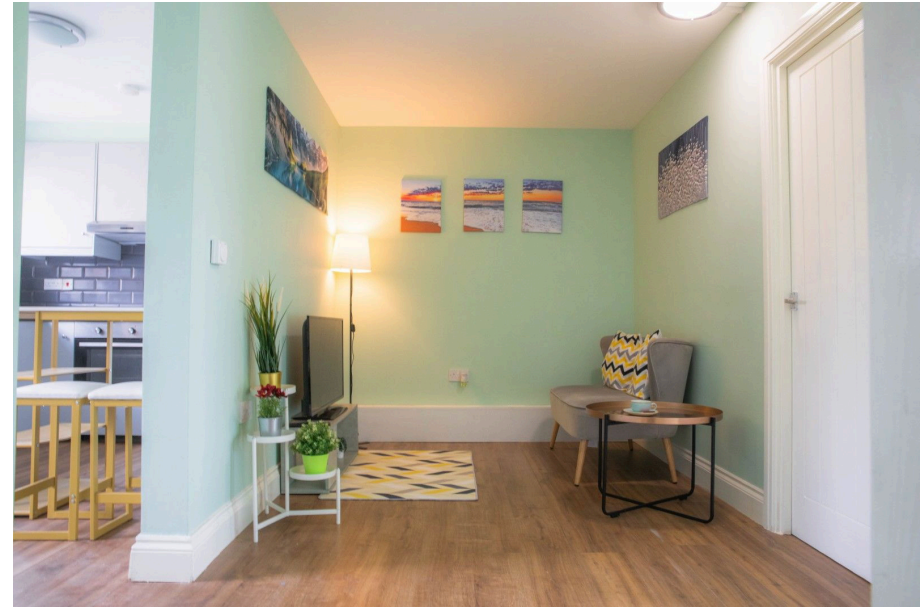
[cockburn-online.co.uk](http://cockburn-online.co.uk)



## Beaconsfield Road, London, SE9

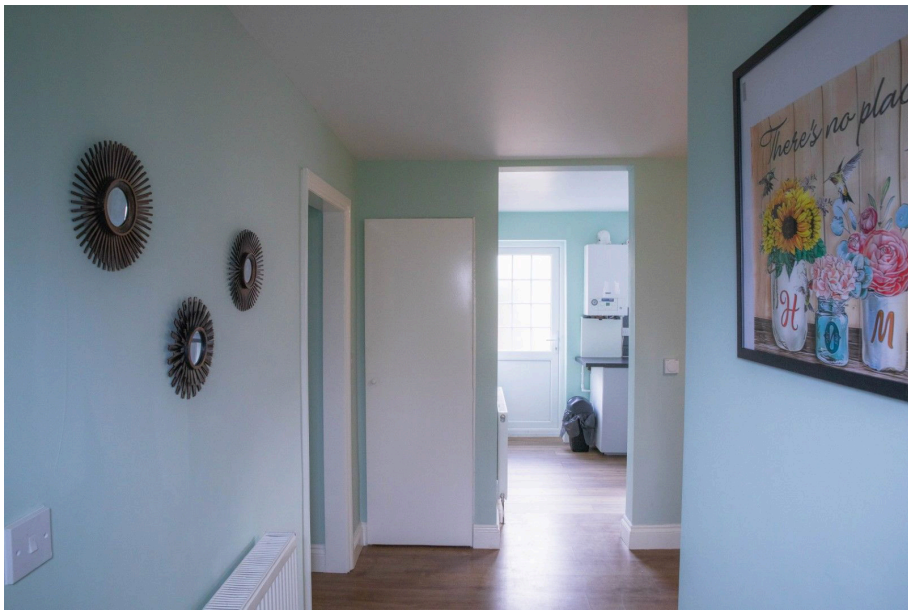
Guide Price £275,000

🛏 2 🚿 1 🛋 1



- Chain Free Sale
- Two Bed Ground Floor Maisonette
- Patio Garden
- Ideal For First Time Buyers
- Share Of Freehold
- Walking Distance Of Local Shops & Amenities
- Within Easy Reach Of Mottingham Railway Station
- Turn-Key Condition
- Council Tax Band B - London Borough Of Bromley





**\*\*\* GUIDE PRICE £275,000 - £300,000 - CHAIN FREE!! \*\*\***

*Presented in turn-key condition is this wonderful two bedroom ground floor flat located in the heart of Mottingham. Boasting two bedrooms, reception area, large kitchen and modern bathroom, the property would be ideal for first time buyers or buy to let investors alike.*

