



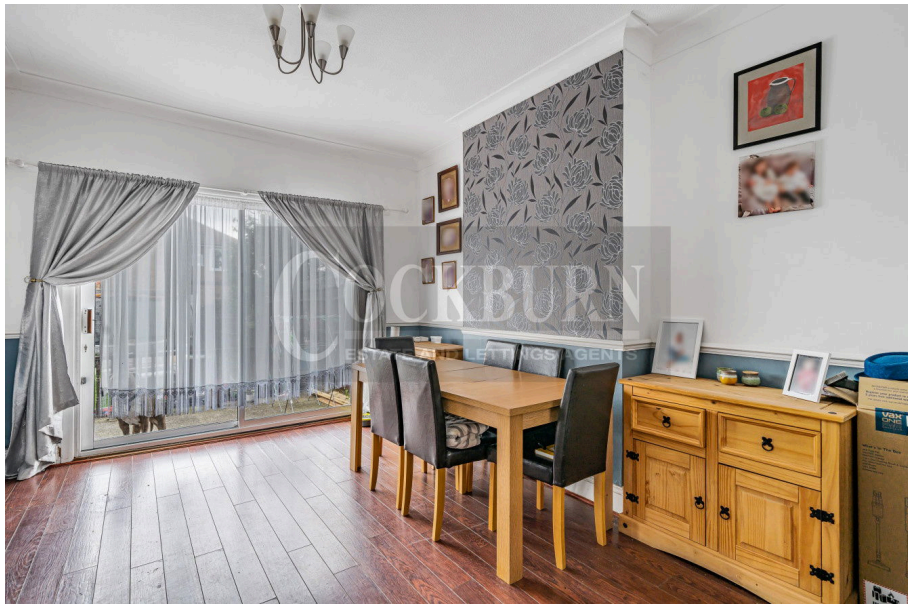
Sidcup Road, London, SE9

Guide Price £585,000

🛏 5 🚗 1 🛋 2



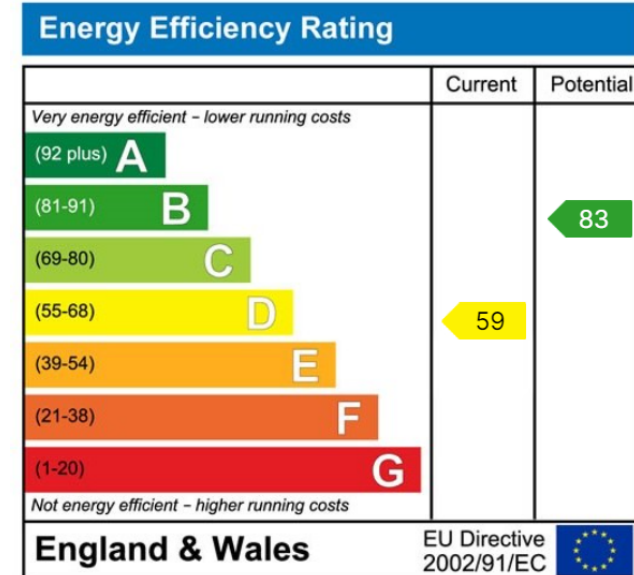
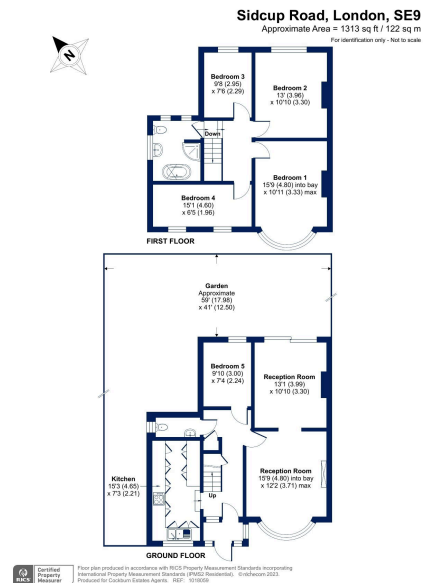
- Five Bedroom Semi-Detached • Two Reception Rooms House
- Off Street Parking For Numerous Vehicles
- Large Well Maintained Garden To Rear
- Possibility To Extend STGRPC
- Superb Schools & Nurseries Nearby
- Excellent Transport Links For Those Needing To Commute
- Ideal For Growing Families
- Energy Rating D - Potential B
- Council Tax Band E - Royal Borough Of Greenwich



*** GUIDE PRICE £585,000 - £600,000 ***

Charming Five Bedroom Semi-Detached Home with Endless Potential in London SE9

Discover the perfect blend of space, potential, and convenience in this wonderful five-bedroom semi-detached residence situated at Sidcup Road. Boasting a prime location and a wealth of desirable features, this property offers an unparalleled opportunity for a comfortable and versatile living experience.



Cockburn EA

352 Footscray Road,
London, SE9 2EB

t: **020 8859 8590**