



Margaret Gardner Drive, Mottingham, SE9

Offers Over £600,000

🛏 4 🚿 1 🛋 2



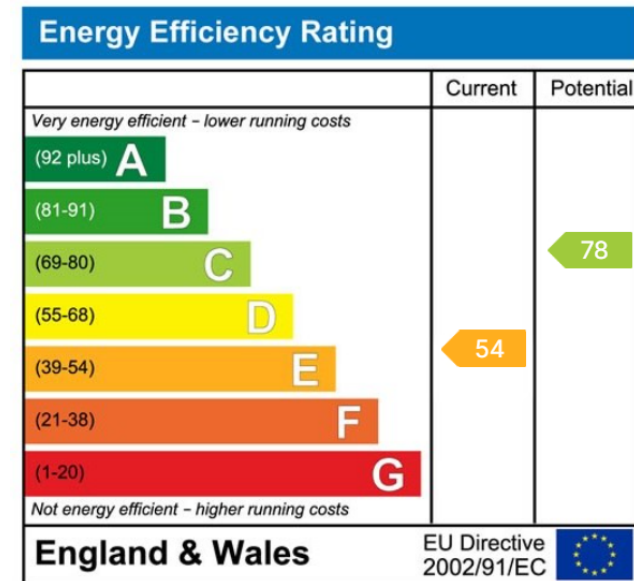
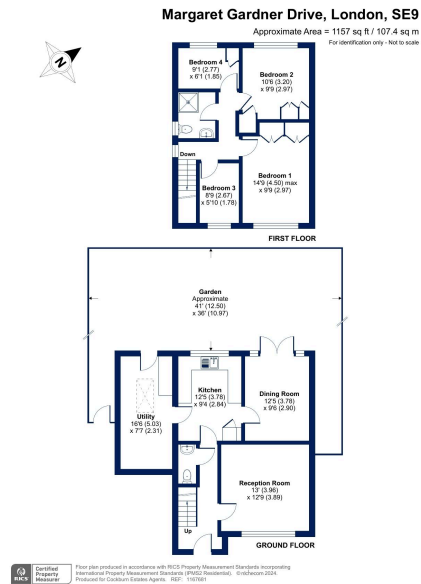
- Chain Free Sale
- Quiet Cul-De-Sac Location
- Generous Garden To Rear
- Highly Regarded Schools Within Easy Reach
- Walking Distance To Mottingham Railway Station
- Four Bedroom Detached House
- Two Reception Rooms
- Off Street Parking
- Close To Local Shops, Amenities & Green Spaces
- Council Tax Band E - Royal Borough Of Greenwich



*** OPEN DAY SATURDAY 3RD MAY BY APPOINTMENT ONLY ***

***** OFFERS OVER £600,000 - CHAIN FREE! *****

Introducing Margaret Gardner Drive – A Wonderful Four-Bedroom Detached House - CHAIN FREE!



Cockburn EA

352 Footscray Road,
London, SE9 2EB

t: **020 8859 8590**