



Launcelot Road, Bromley, BR1 - Corner Plot!

Guide Price £400,000

🛏 3 🚿 1 🚿 1

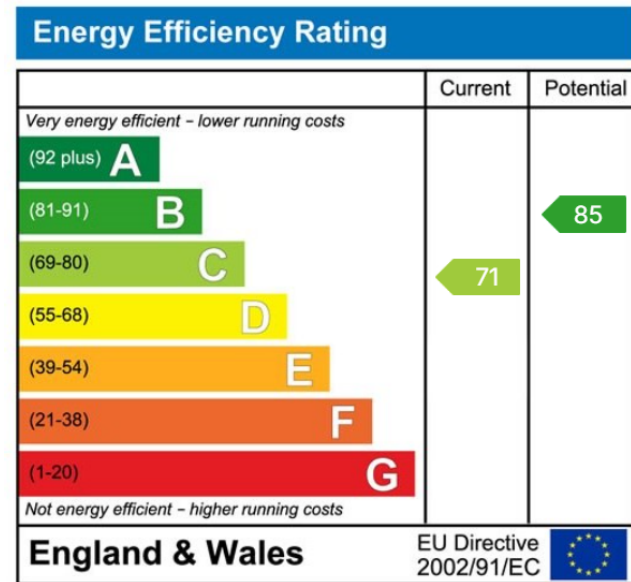
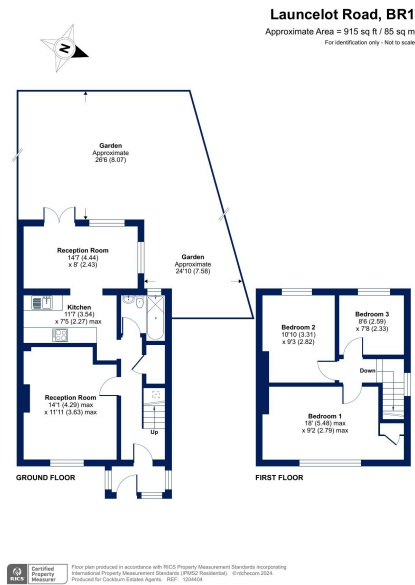


- Three Bed End Terraced House with large plot to side
- Large Wrap Garden
- Excellent Bus Links Keeping You Connected With Bromley, Eltham & Lewisham
- Ideal For Growing Families
- Council Tax Band C - London Borough Of Lewisham
- Versatile Conservatory / 2nd reception room / Currently 4th bedroom
- Walking Distance Of Grove Park Railway Station
- Local Shops & Amenities Within Easy Reach
- Huge Potential



***** GUIDE PRICE £400,000 - £425,000 *****

Introducing Launcelot Road - A Wonderful End Terrace Home on a large corner plot - great extension potential!!



Cockburn EA
 352 Footscray Road,
 London, SE9 2EB
 t: 020 8859 8590