



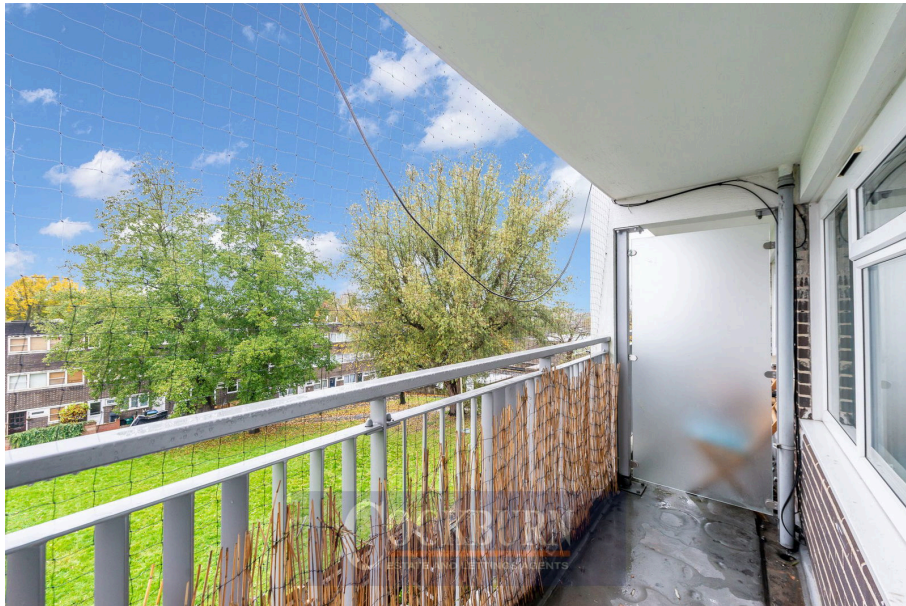
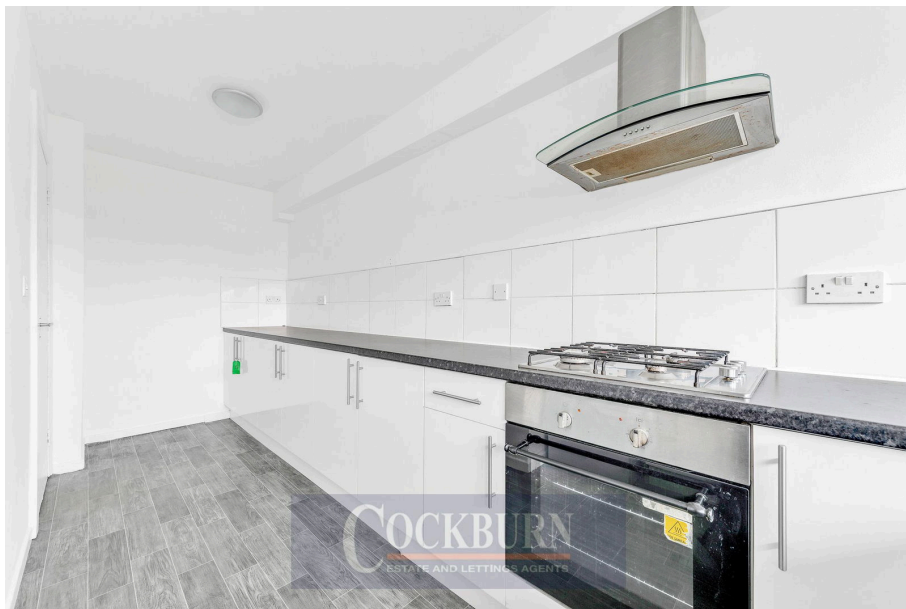
Belvoir Close, Mottingham, SE9

£285,000

🛏️ 3 🚪 1 🚻 1



- Chain Free Sale
- Long Lease Length
- Turn-Key Condition
- Excellent Bus Links Keeping You Connected With Bromley, Chislehurst & Eltham
- EPC Rating C
- Three Bed Maisonette
- Ample Space Throughout
- Easy Reach Of Mottingham Railway Station & Village Shops
- Ideal For First Time Buyers Or Buy To Let Investors
- Council Tax Band B - London Borough Of Bromley



***** CHAIN FREE SALE *****

Cockburn present this wonderful three bed split level maisonette, offered in turn-key condition and waiting for new owners to put their own mark on!

