

37b Elizabeth Avenue, Newbury, RG14 6HA

Guide Price £175,000

🛏 1 🚿 1 🚗 1



One double bedroom ground floor maisonette, positioned on a popular residential road to the south of the town centre. Within walking distance of a small parade of shops and close to doctors/dental surgeries and vets. Its close to open countryside with stunning walks over the fields on the historic Newbury battle grounds.

The accommodation comprises own entrance, kitchen/dining room, living room with patio doors opening to the rear garden, double bedroom and bathroom. Benefits will include at point of exchange, a 999 year lease, share of freehold, own private rear garden, allocated off-road parking for two cars and no onward chain. EPC Rating D.

Key Features

- Ground floor maisonette
- Kitchen/dining room
- Own private rear garden
- 999 year lease at point of exchange
- Peppercorn service charge
- One double bedroom
- Living room with French doors to the rear garden
- Two allocated off-road parking spaces
- Share of freehold
- No onward chain



Approximate Gross Internal Area
40.06 sq m / 431.20 sq ft

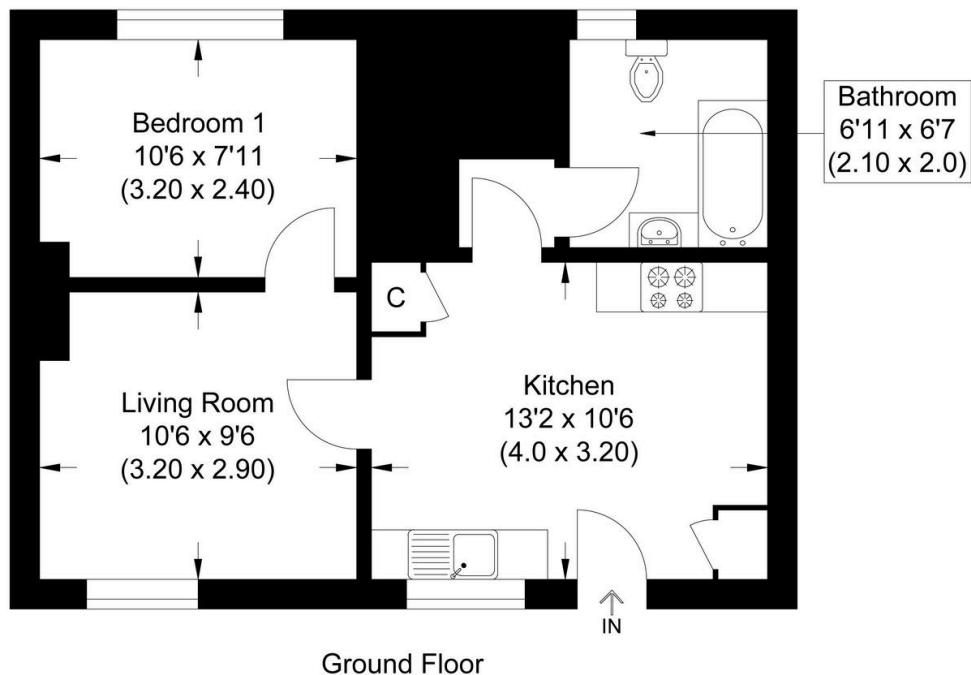


Illustration for identification purposes only, measurements are approximate, not to scale.