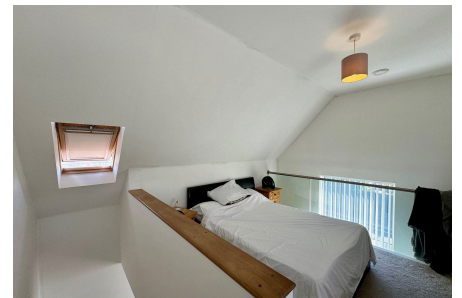
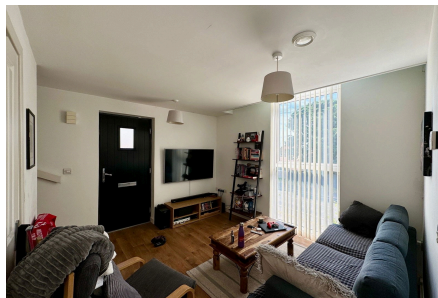


14 Faircross Court, Thatcham, RG18 3GL

£155,000

🛏 1 🚗 1 🚲 1



Located within a few minutes walk of Thatcham town centre, and just over a mile and a half to the rail station is this modern split level one bedroom maisonette. There is easy access along the A4 to Newbury and on to the A34/M4 junction, and also to Reading to the east.

The light and airy accommodation consists of kitchen, living/dining room, bathroom to the first floor and bedroom to the second floor. Benefits include double glazing, electric heating and allocated parking.

EPC Rating C.

Key Features

- NO ONWARD CHAIN
- Split level
- Allocated parking
- Maisonette
- Approximately 2.5 miles to Newbury
- One bedroom
- Walk to town centre
- Modern property
- Easy access to A4, A34 and M4
- 988 Years remaining on lease. Ground rent £255.55 per annum and Service charge £1440.70 per annum.

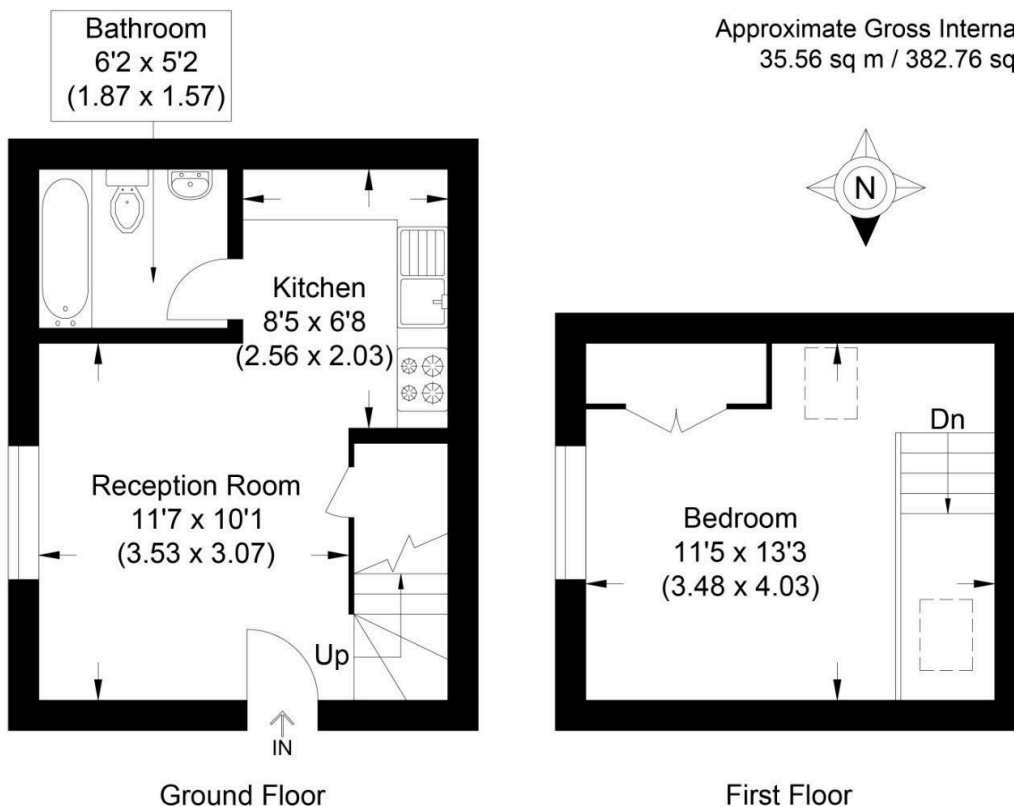


Illustration for identification purposes only, measurements are approximate, not to scale.