



Cottonwoods, 8 Wallingtons Road, Kintbury, Hungerford, RG17 9TP

£900,000

🛏️ 4 🚿 2 🚗 3

- NO ONWARD CHAIN
- Large south facing garden
- Walk to village centre and mainline rail station
- Light and airy
- Double detached garage
- Four bedrooms
- End of a quiet lane
- Backs on to open countryside
- Potential to update and further extend STPP
- Views



NO ONWARD CHAIN. Located at the end of a quiet lane and within a short walk of the village centre and mainline rail station is this well maintained four bedroom home that sits in a fifth of an acre plot with good sized south facing garden backing on to fields. The property has potential to be improved and extended (stpp) allowing the new owners to put their own mark on it. The fabulous rear garden has been meticulously maintained, and there is a gate from the property to a footpath leading to the High Street and into beautiful countryside.

The accommodation consists of entrance lobby, hall, kitchen/ breakfast room, dining room, living room, study, utility, master bedroom with balcony and ensuite, three further double bedrooms all with built- in wardrobes, and family bathroom. Benefits include double detached garage, plenty of parking, upvc double glazing and oil fired central heating. EPC Rating to follow.



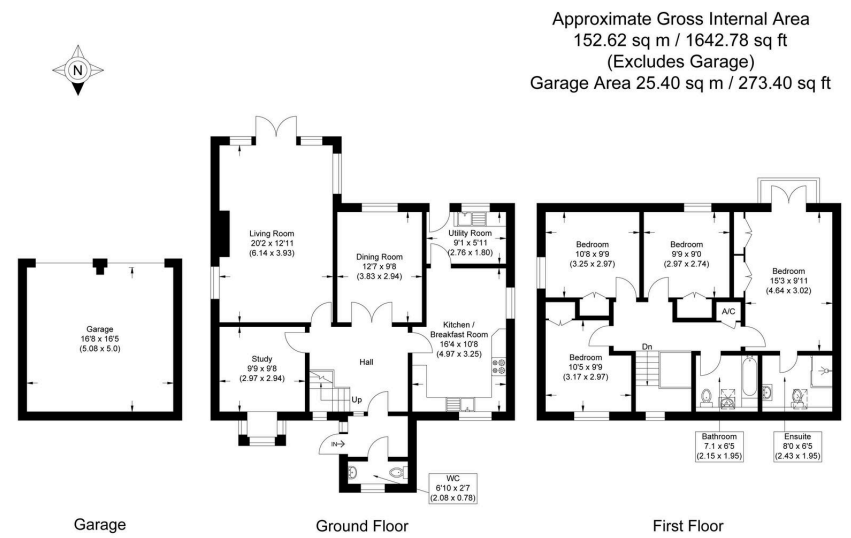


Illustration for identification purposes only, measurements are approximate, not to scale.



☎ 01635 523777 (Sales)

☎ 01635 523880 (Lettings)

🌐 www.downer.co.uk

DOWNER & CO Estate Agents, 44 Cheap Street Newbury, Berkshire RG14 5BX