



16 Hedgeway, Newbury, RG14 2PB

£415,000

🛏 3 🍽 2 🛋 2

- No onward chain
- End of a quiet cul-de-sac
- Three bedrooms
- Garage
- Front and rear gardens
- Extended to produce utility room and wet room
- Views
- Well maintained
- Driveway
- Two bathrooms



NO ONWARD CHAIN. Located at the end of a quiet cul-de-sac is this extended three bedroom home with good sized front and rear gardens.

The property has been well maintained and offers the opportunity to further update allowing the new owners to put their mark on it. The useful extension to the ground floor has created a utility room, wet room and additional storage with doors to the front and rear of the property.

The accommodation consists of entrance hall, kitchen/dining room, living room, utility room, wetroom, master bedroom, further double bedroom, third bedroom family bathroom and WC. Benefits include upvc double glazing, gas-fired central heating, garage, and driveway parking. EPC Rating to follow.



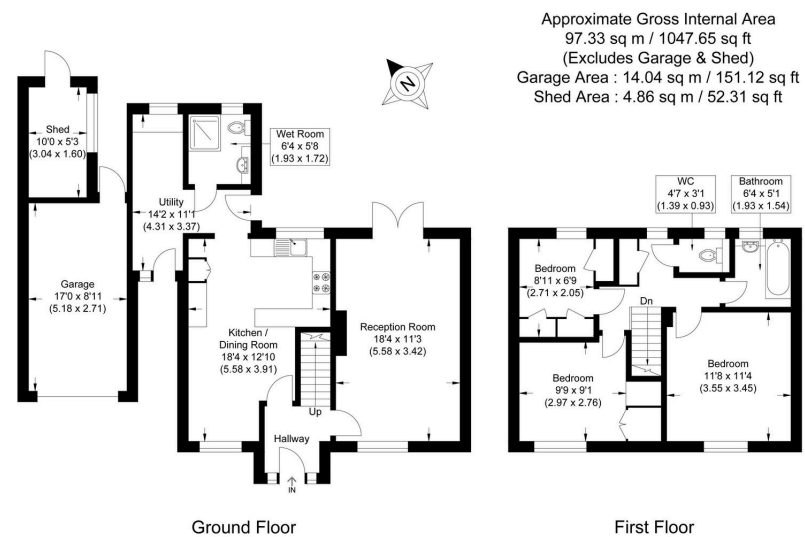


Illustration for identification purposes only, measurements are approximate, not to scale.



☎ 01635 523777 (Sales)

☎ 01635 523880 (Lettings)

🌐 www.downer.co.uk

DOWNER & CO Estate Agents, 44 Cheap Street Newbury, Berkshire RG14 5BX