



DOWNER & CO

TRUSTED SINCE 1988

5 Farmhouse Mews, Thatcham, RG18 4NW

£450,000

🛏️ 3 🚿 2 🛋️ 1

- Backing onto open fields
- North eastern fringes of Thatcham
- Modern semi detached cottage
- Three double bedrooms
- Master en-suite
- Downstairs cloakroom
- Just decorated and carpeted throughout
- Approx 75ft rear garden
- Carport and additional driveway
- No onward chain



With far reaching views over the fields to the rear, on the north eastern fringes of Thatcham, a modern three double bedroom semi detached cottage. It has just been redecorated and carpeted throughout and offers No Onward Chain.

The accommodation includes entrance hall, cloakroom, triple aspect living/dining room, kitchen/breakfast room, master bedroom en-suite, two further double bedrooms, family bathroom, approx 75ft rear garden backing directly onto fields, driveway parking with additional carport.





Approximate Gross Internal Area
89.93 sq m / 967.99 sq ft

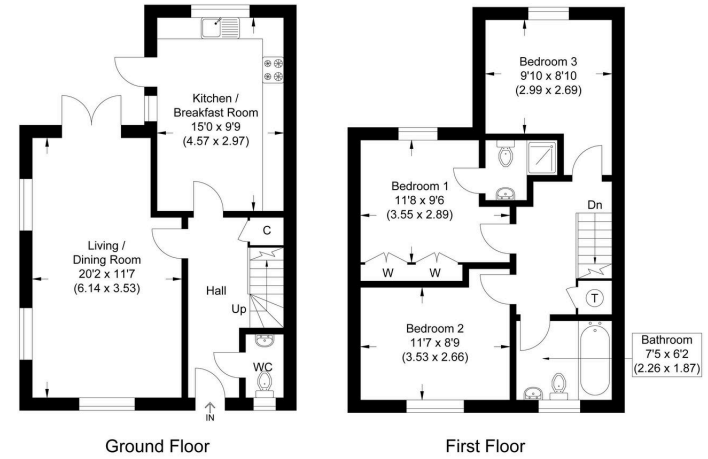
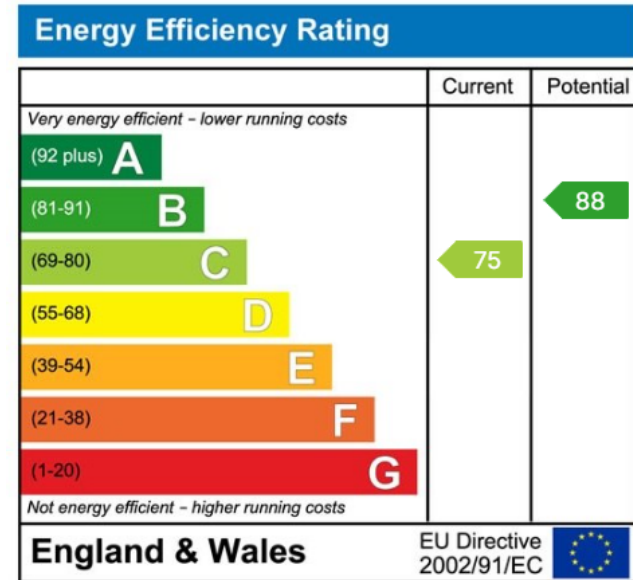


Illustration for identification purposes only, measurements are approximate, not to scale.



☎ 01635 523777 (Sales)

☎ 01635 523880 (Lettings)

🌐 www.downer.co.uk