



## 30 Harebell Drive, Thatcham RG18 4DX

£595,000

🛏️ 4 🚿 2 🚗 2

- Dunston Park
- Four bedrooms
- Beautifully presented throughout
- Wood burner in the living room
- Landscaped rear garden
- Detached house
- Master en-suite
- Stunning open plan kitchen/diner
- Refitted bathrooms
- Garage and double width driveway



A very attractive four bedroom detached family home located on the very popular Dunston Park development. The house has been beautifully updated and refurbished throughout, including a wood burner in the living room and the creation of a stunning open plan kitchen/diner with centre island and two sets of doors leading into the landscaped rear garden.

The accommodation includes entrance hall, cloakroom, bay fronted living room, open plan kitchen/dining room, utility room, large master bedroom with smartly refitted en-suite shower room, three further bedrooms and refitted family bathroom. Outside offers a landscaped rear garden with large patio area., single garage and double width driveway parking.

EPC to Follow.





Approximate Gross Internal Area  
 106.80 sq m / 1149.58 sq ft  
 (Excludes Garage)  
 Garage Area 14.20 sq m / 152.84 sq ft

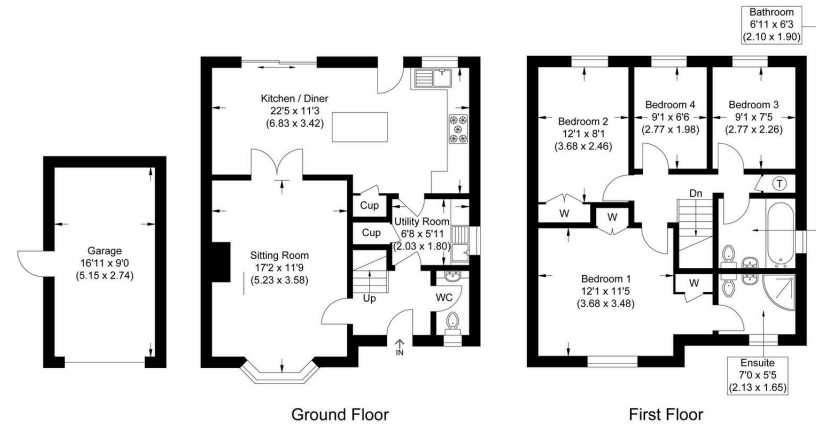


Illustration for identification purposes only, measurements are approximate, not to scale.



☎ 01635 523777 (Sales)

☎ 01635 523880 (Lettings)

🌐 [www.downer.co.uk](http://www.downer.co.uk)