

## 32 Harbury Court, Queens Road, Newbury RG14 7NQ

Shared Ownership £82,500

🛏️ 2 🍳 2 🚗 1



Ideal for a FTB - Within an easy walk of the train station and town centre, a 50% share of a top floor two bedroom apartment.

The accommodation includes security entry system to communal entrance hall with stairs to second floor landing, front door into own hallway, living/dining room with east facing Juliet balcony and access to kitchen, two bedrooms and bathroom. Outside offers carport parking and communal gardens. No Onward Chain.

EPC Rating: C.

## Key Features

- 50% Shared Ownership Rent: £360.90 pcm
- Top floor apartment
- Juliet balcony from living room
- Communal gardens
- No Onward Chain
- Easy walk to town and train station
- Two bedrooms
- Carport parking
- Service Charge: £145 pcm. (£1740 per annum). Lease 125 years from 2000.

Approximate Gross Internal Area  
49.07 sq m / 528.18 sq ft

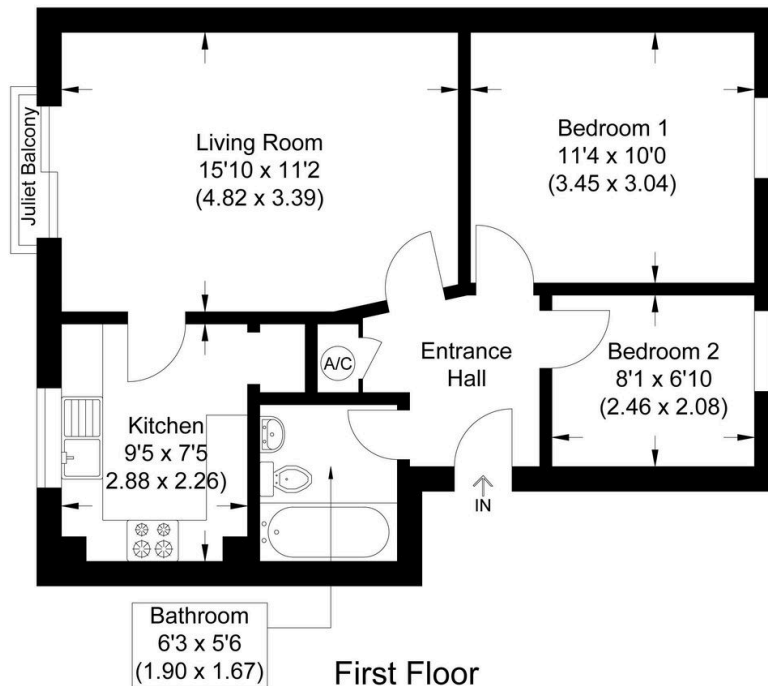


Illustration for identification purposes only, measurements are approximate, not to scale.