



[www.inspiredldn.co.uk](http://www.inspiredldn.co.uk)

# Vernon Court, Hendon Way, NW2

Guide Price £550,000

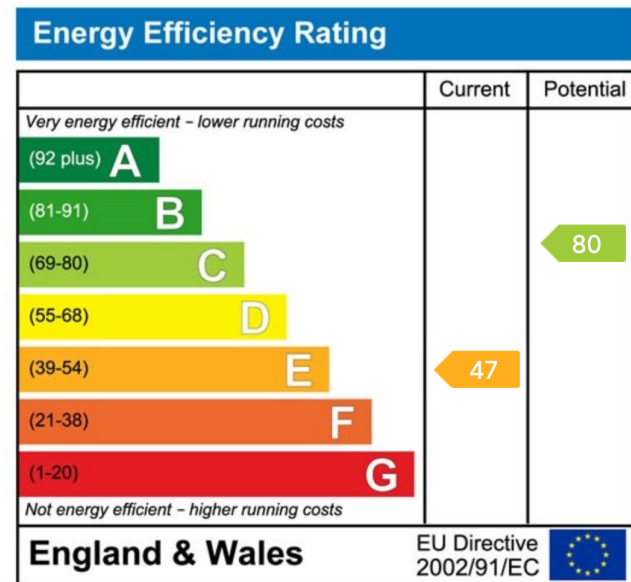
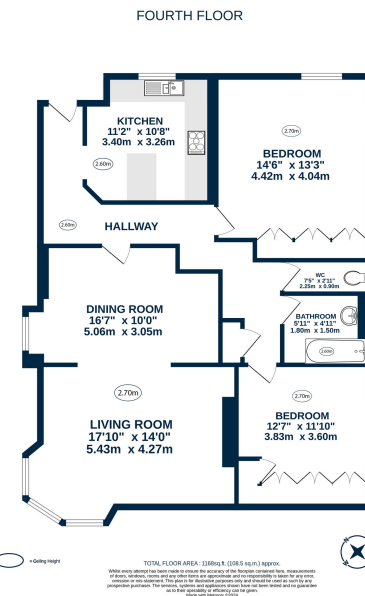
🛏️ 2 🚗 1 🚗 1

- Stunning Mock Tudor Building
- Top Floor with fantastic views
- Lift access
- Hot water and heating included in service charge
- Incredible size apartment spanning circa 1168 sqft
- Expansive lounge with stunning bay window
- Two double bedrooms
- Close to Finchley Road & West Hampstead amenities
- Double glazed windows
- Leasehold - 951 years remaining



The property benefits from a large double aspect reception room, a separate fully fitted kitchen, principal bedroom with built in wardrobes, second bedroom also with built in wardrobes, and large storage cupboard in hallway. Further benefits include access to communal gardens, a long lease of c.952 years, oak wood flooring and double glazing throughout. The development is positioned within close proximity to the facilities and amenities of Finchley Road, West Hampstead, and Golders Green with a variety of transport links, including Jubilee Line/ Metropolitan Line (Finchley Road and West Hampstead) the Northern Line (Golders Green), as well as the Overground link and the bus routes into Central London. Within school catchment area of much sought after Emmanuel CofE School on Mill Lane, NW6.





P: 0208 187 2502  
E: sales@inspiredldn.co.uk