



www.inspiredldn.co.uk

Broomsleigh Street, West Hampstead, NW6

£3,500PCM (Deposit: £1,615)



- Charming Victorian Retreat
- Fully Equipped Kitchen for Culinary Enthusiasts
- Dedicated Work Area
- Private Patio with Garden Furniture
- Ground Floor
- Spacious Living Room with Flexible Sleeping
- Generous Storage & Wardrobe Space
- Smart TV & High-Speed Wi-Fi
- Quick Access to Public Transport
- Short or Mid-Term Stays Welcome!

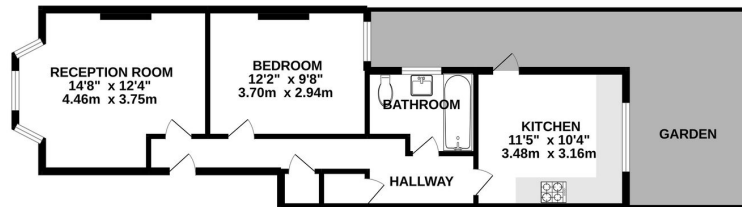


Tax Band: D Furnished: Furnished

Discover your ideal West Hampstead retreat in this charming Victorian apartment, blending classic elegance with modern comfort. Featuring high ceilings and plenty of natural light, this ground-floor gem offers a stylish living room with a new sofa bed, smart TV, and workspace—perfect for singles, couples, or two couples. The cozy bedroom has a luxury double bed and ample storage. Enjoy cooking in the fully equipped kitchen, with a private patio for alfresco dining. The modern bathroom includes a relaxing bathtub and shower combo. With central heating, double-glazed windows, and a washer-dryer, this fully furnished apartment includes all essentials for immediate move-in. It's available for the short term. Located in vibrant West Hampstead, you're just steps from transit links, offering easy access to London's attractions. **Book now!**



GROUND FLOOR
536 sq.ft. (49.8 sq.m.) approx.



GROUND FLOOR
TOTAL FLOOR AREA: 536 sq ft. (49.8 sq.m.) approx.
Whilst every attempt has been made to ensure the accuracy of the floorplan contained here, measurements of doors, windows, rooms and any other items are approximate and no responsibility is taken for any error, omission or mis-statement. This plan is for illustrative purposes only and should be used as such by any prospective purchaser. The services, systems and appliances shown have not been tested and no guarantee as to their operability or efficiency can be given.
Made with Neenpage ©2022



P: 0208 187 2503

E: lettings@inspiredldn.co.uk