

Your Logo

32 Stuart Road

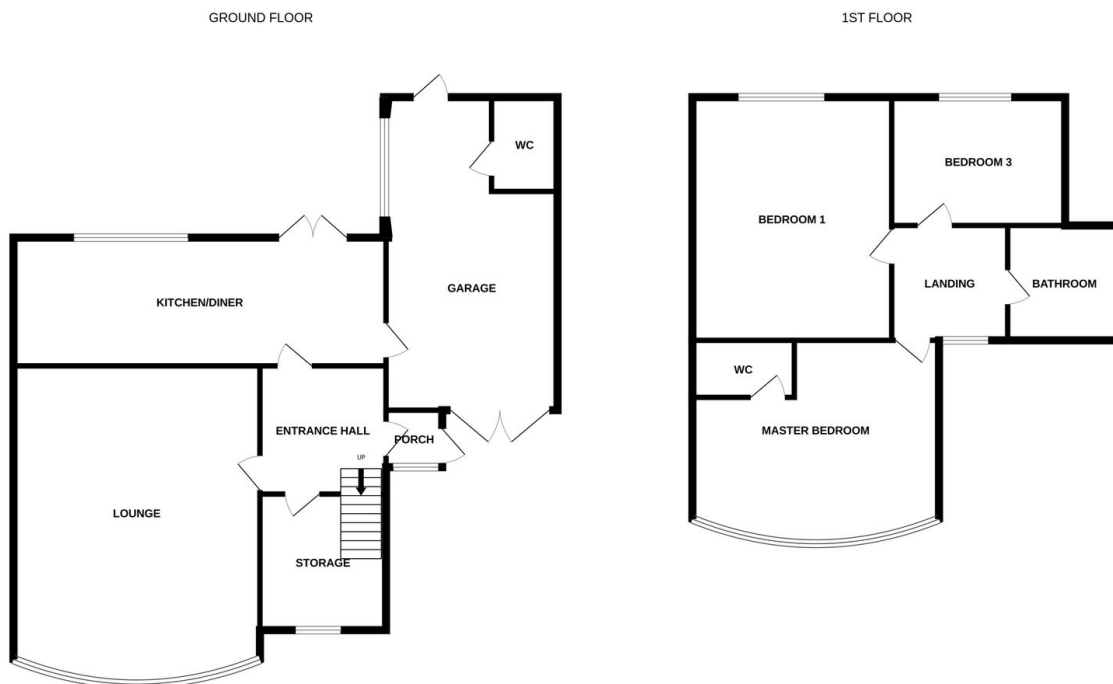
£375,000

3 2 1



Your Logo

- Semi detached
- Garage
- En suite wc
- Large rear garden
- Great location
- Off road parking
- Modern throughout
- Modern family bathroom
- Under stairs large storage/ office area
-



Whilst every attempt has been made to ensure the accuracy of the floorplan contained here, measurements of doors, windows, rooms and any other items are approximate and no responsibility is taken for any error, omission or mis-statement. This plan is for illustrative purposes only and should be used as such by any prospective purchaser. The services, systems and appliances shown have not been tested and no guarantee as to their operability or efficiency can be given.
Made with Metropix ©2025

This well-presented three-bedroom semi-detached home in Halesowen is ready to move into with no work required. It features a spacious interior, a large rear garden, and off-road parking, offering both comfort and convenience. Ideal for families, the property is located in a desirable area with easy access to local amenities and transport links.