



**HENDERSON
CONNELLAN**
ESTATE AGENTS

Princes Street, Kettering

"A Prince Among Properties"

🛏️ 2 🍽️ 1 🛋️ 2



"A Prince Among Properties"

This spacious Victorian property offers an ideal blend of period features and modern convenience, situated just moments from the town centre and within easy reach of the train station. The home has entrance hallway, an open-plan living and dining area with open fireplace and a well-appointed kitchen. Upstairs there are two double bedrooms and a large principal bathroom. The rear garden features a useful outbuilding with a WC and enjoys an established feel. With its central location and transport links to London in under an hour, this home presents an excellent opportunity for town living with character.

Living/Dining Room - 7.39m x 3.48m (24'3" x 11'5")

Kitchen - 4.72m x 2.62m (15'6" x 8'7")

Bedroom One - 4.65m x 3.63m (15'3" x 11'11")

Bedroom Two - 3.63m x 2.87m (11'11" x 9'5")

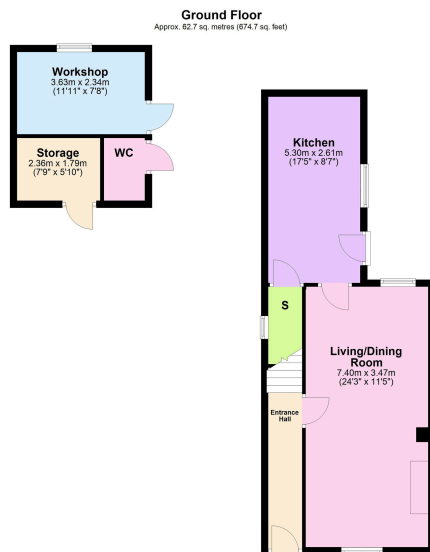
Bathroom - 3.3m x 2.64m (10'10" x 8'8")

Workshop - 3.63m x 2.34m (11'11" x 7'8")

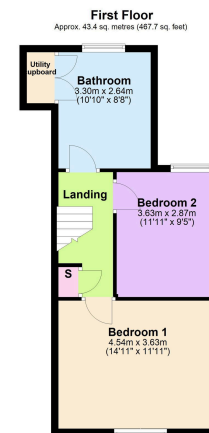




- Two Double Bedrooms
- Utility Cupboard
- Large Family bathroom
- Council Tax: A
- Outbuilding
- Convenient Location
- EPC RATING: D



Total area: approx. 106.1 sq. metres (1142.4 sq. feet)



Disclaimer: These particulars do not form part of any offer or contract and should not be relied upon as statements or representations of fact. Any areas, measurements of distances are approximate. The text, photographs and plans are for guidance only and are not necessarily comprehensive.

15-16 Market Place, Kettering,
Northamptonshire, NN16 0AJ

