



**HENDERSON
CONNELLAN**
ESTATE AGENTS

Southfield Drive, Barton Seagrave NN15 5YQ

"Modern Elegance"

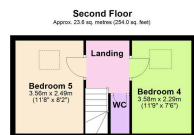
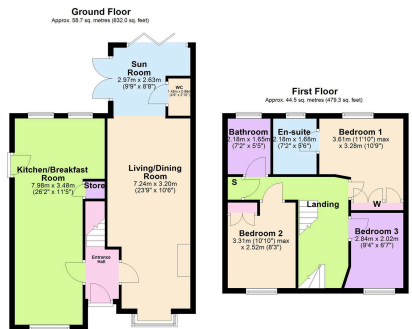
🛏️ 5 🚿 2 🚗 2



"Modern Elegance"

This impressive five-bedroom detached property, situated on Southfield Drive, offers contemporary living in a convenient location. The ground floor extension has created a fantastic free flowing layout, featuring an open-plan living and dining area complemented by stylish panelling and a feature media wall with electric fire and free flows to the sun room and guest cloakroom to the rear. The modern kitchen/breakfast room is a particular highlight, equipped with integrated double ovens, full-size fridge and freezer, wine cooler and specialist work surfaces. Upstairs, the accommodation is equally well-appointed, with five bedrooms spread across two floors, including an ensuite to the principal bedroom. The property benefits from a well-proportioned rear garden featuring a generous patio perfect for outdoor dining. Practical benefits include off-road parking for three vehicles and easy access to local amenities.





Total area: approx. 126.8 sq. metres (1365.3 sq. feet)

- Gas Central Heating
- UPVC Double Glazed Windows
- Five Bedroom
- Detached
- Modern Interior
- Convenient Location
- Open Plan
- EPC RATING: D
- COUNCIL TAX: D



15-16 Market Place, Kettering,
Northamptonshire, NN16 0AJ

Disclaimer: These particulars do not form part of any offer or contract and should not be relied upon as statements or representations of fact. Any areas, measurements of distances are approximate. The text, photographs and plans are for guidance only and are not necessarily comprehensive.

