



ZAFER CETINEL POWERED BY **exp** TM UK

@ zafer.cetinel@exp.uk.com

zafercetinel.exp.uk.com

01242 374 844

Bouncers Lane, Prestbury, Cheltenham, GL52 5JB

Guide Price £550,000

🛏️ 4 🚿 2 🛋️ 2

- BOUNCERS LANE, PRESTBURY VILLAGE
- GREAT SCHOOL CATCHMENT FOR ALL AGES
- BEAUTIFUL LIVING ROOM
- FOUR BEDROOMS
- SEPARATE OFFICE and UTILITY / DOWNSTAIRS TOILET
- STUNNING EXTENDED FAMILY HOME WITH AMAZING VIEWS OF CLEEVE HILL
- LARGE KITCHEN / DINING ROOM WITH UNDERFLOOR HEATING AND DETACHED GARDEN WITH STUNNING VIEWS
- CENTRAL HEATING
- TWO BATHROOMS
- IMMACULATE CONDITION AND IT IS READY TO MOVE IN



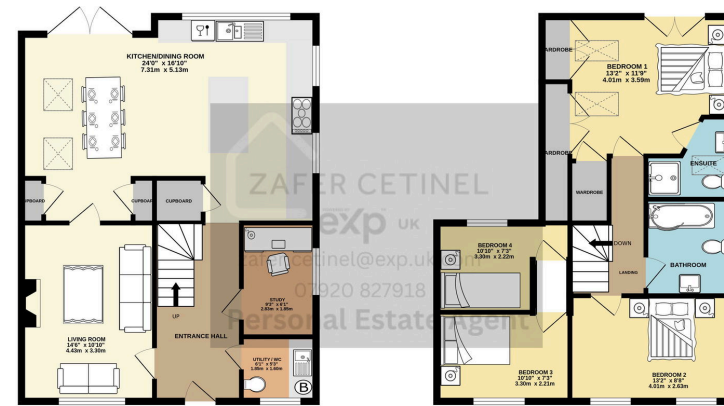
Welcome to this stunning family home in the heart of Prestbury, Cheltenham! Just a short walk from the vibrant village high street, you'll enjoy local shops, delightful pubs, and the highly regarded St. Mary's Federation primary school right at your doorstep. This thoughtfully extended property combines elegance with practicality, featuring a spacious entrance hall, a utility/WC, a dedicated study, and an inviting living room, all leading to a fantastic kitchen/dining area perfect for entertaining. Upstairs, you'll find four generous bedrooms, including a luxurious master suite with an en-suite bathroom, a Juliet balcony overlooking Cleeve Hill, and ample built-in wardrobes. The exterior boasts a spacious driveway for multiple cars, while the rear garden features a large patio, a wooden shed, and plenty of lawn space—backing onto local allotments for added privacy.





GROUND FLOOR
732 sq.ft. (68.0 sq.m.) approx.

1ST FLOOR
596 sq.ft. (55.4 sq.m.) approx.



TOTAL FLOOR AREA: 1328 sq.ft. (123.4 sq.m.) approx.
While every attempt has been made to ensure the accuracy of the floorplan contained here, measurements of rooms, sections, corners and all other areas are approximate and no responsibility is taken for any error, omission or mis-statement. This plan is for illustrative purposes only and should be used as such by any prospective purchaser. The fixtures, fittings and appliances shown have not been tested and no guarantee as to their operability or efficiency can be given.
Made with Metreplan 12/04

