

Glamford Road, Rochester, ME2 2QP

Guide Price £300,000 - £325,000

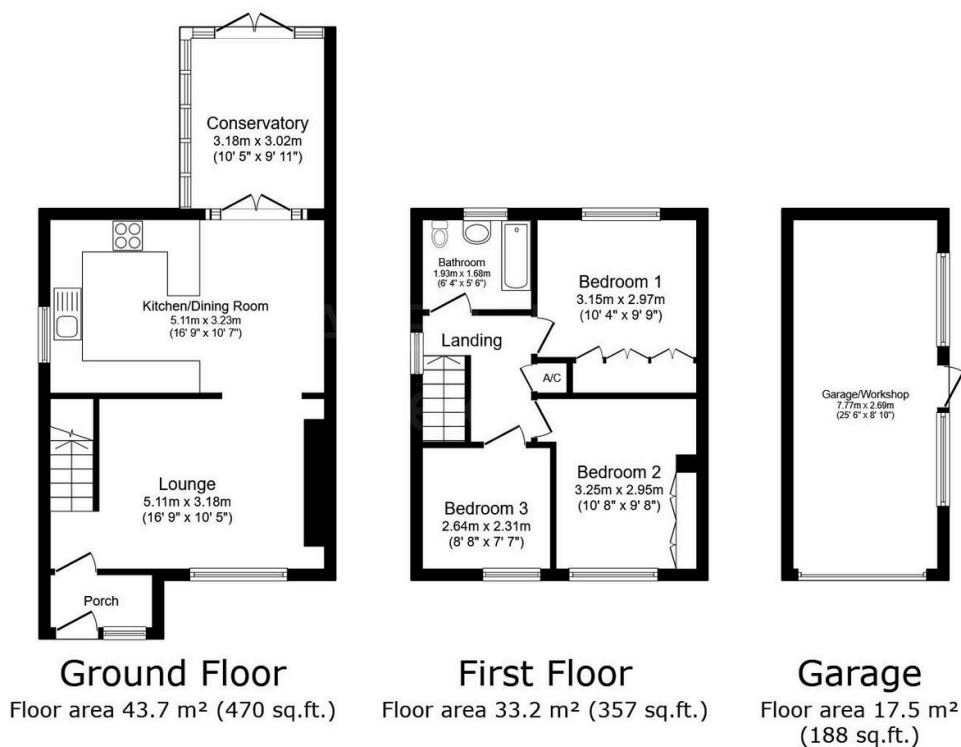
3 1 1



CALL TO BOOK YOUR VIEWING. Guide Price £300,000 - £325,000. If you are looking to buy your first home or perhaps you need a bigger property for your growing family? Then this home certainly ticks a lot of boxes. Offering three bedrooms, double driveway, garage and the added bonus of a conservatory and modern fitted kitchen. You can simply move straight in and enjoy. QUOTE AP0490 to book your viewing.

Key Features

- 3 Bedroom Semi Detached Home
- Driveway
- Close Proximity To Schools
- Ideal Family Home
- Tenure - Freehold / Council tax band C
- Conservatory
- 25FT Garage / Workshop
- Near To Motorway Access
- Modern fitted kitchen with integrated appliances
- QUOTE AP0490



TOTAL: 94.4 m² (1,016 sq.ft.)

This floor plan is for illustrative purposes only. It is not drawn to scale. Any measurements, floor areas (including any total floor area), openings and orientations are approximate. No details are guaranteed, they cannot be relied upon for any purpose and do not form any part of any agreement. No liability is taken for any error, omission or misstatement. A party must rely upon its own inspection(s). Powered by www.Propertybox.io